

TRIP6 Antibody

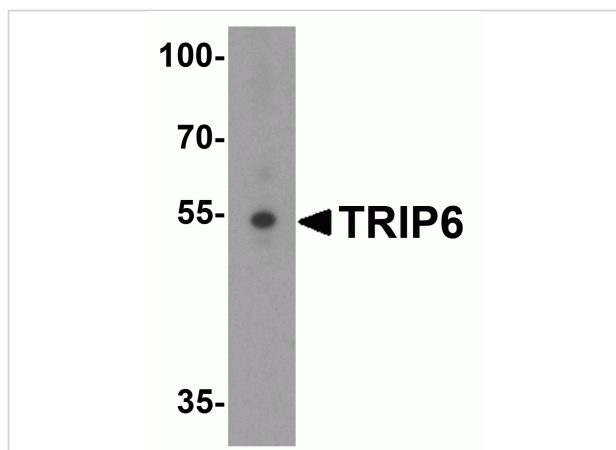
CATALOG NUMBER: 6001

Specifications

Host Species	Rabbit
Species Reactivity	Human, Mouse
Homology	Predicted species reactivity based on immunogen sequence: Bovine: (86%)
Immunogen	TRIP6 antibody was raised against a 15 amino acid synthetic peptide near the center of human TRIP6. The immunogen is located within amino acids 190 - 240 of TRIP6.
Conjugate	Unconjugated
Tested Applications	ELISA, ICC, IF, WB
User Note	Optimal dilutions for each application to be determined by the researcher.

Properties

Purification	TRIP6 Antibody is affinity chromatography purified via peptide column.
Clonality	Polyclonal
Isotype	IgG
Physical State	Liquid
Buffer	TRIP6 Antibody is supplied in PBS containing 0.02% sodium azide.
Concentration	1 mg/mL
Storage Conditions	TRIP6 antibody can be stored at 4°C for three months and -20°C, stable for up to one year. As with all antibodies care should be taken to avoid repeated freeze thaw cycles. Antibodies should not be exposed to prolonged high temperatures.



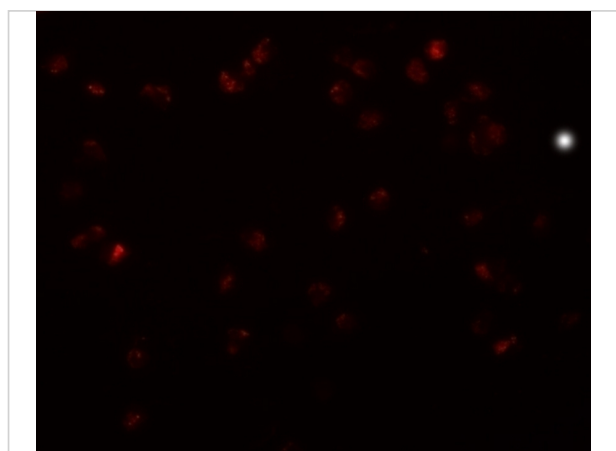
TRIP6 Antibody 1

Western blot analysis of TRIP6 in A431 cell lysate with TRIP6 antibody at 1 µg/mL.



TRIP6 Antibody 2

Immunocytochemistry of TRIP6 in HeLa cells with TRIP6 antibody at 10 µg/mL.



TRIP6 Antibody 3

Immunofluorescence of TRIP6 in HeLa cells with TRIP6 antibody at 20 µg/mL.

Disclaimer

Disclaimer

Optimal dilutions/concentrations should be determined by the end user. The information provided is a guideline for product use. This product is for research use only.

For research use only. For additional information, visit ProSci's [Terms and Conditions Page](#).