

## NALP13 Antibody

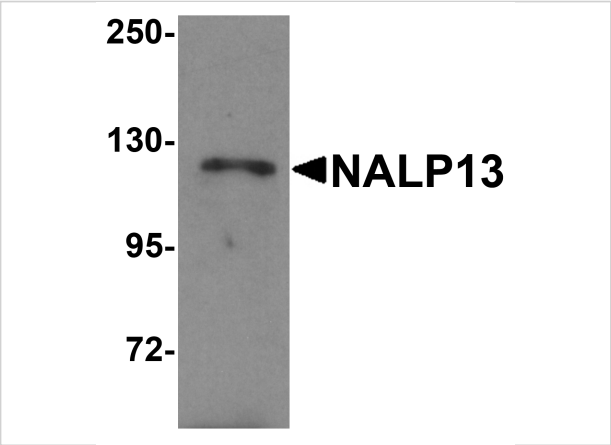
CATALOG NUMBER: 5973

### Specifications

|                     |   |
|---------------------|---|
| Host Species        | Rabbit  |
| Species Reactivity  | Human   |
| Immunogen           | NALP13 antibody was raised against a 19 amino acid synthetic peptide near the amino terminus of human NALP13.<br>The immunogen is located within amino acids 150 - 200 of NALP13. |
| Conjugate           | Unconjugated  |
| Tested Applications | ELISA, ICC, IF, WB  |
| User Note           | Optimal dilutions for each application to be determined by the researcher.  |

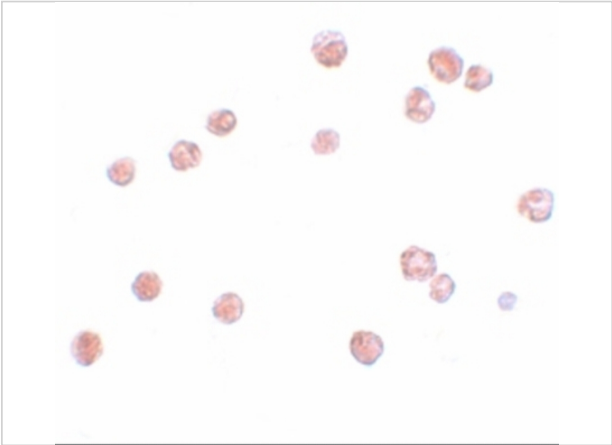
### Properties

|                    |  |
|--------------------|--|
| Purification       | NALP13 Antibody is affinity chromatography purified via peptide column.  |
| Clonality          | Polyclonal   |
| Isotype            | IgG  |
| Physical State     | Liquid   |
| Buffer             | NALP13 Antibody is supplied in PBS containing 0.02% sodium azide.  |
| Concentration      | 1 mg/mL  |
| Storage Conditions | NALP13 antibody can be stored at 4°C for three months and -20°C, stable for up to one year. As with all antibodies care should be taken to avoid repeated freeze thaw cycles. Antibodies should not be exposed to prolonged high temperatures. |



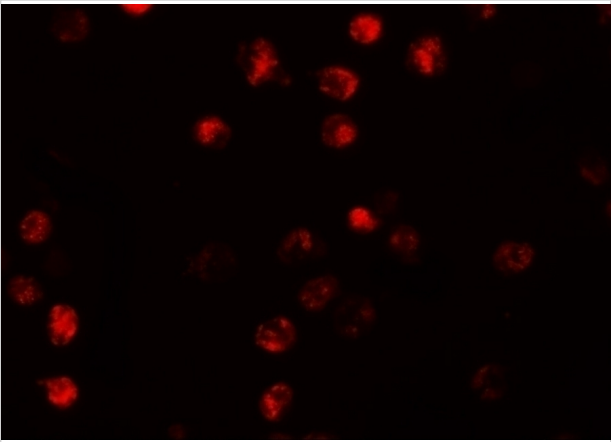
NALP13 Antibody 1

Western blot analysis of NALP13 in K562 cell lysate with NALP13 antibody at 1 µg/mL.



NALP13 Antibody 2

Immunocytochemistry of NALP13 in K562 cells with NALP13 antibody at 2.5 µg/mL.



NALP13 Antibody 3

Immunofluorescence of NALP13 in K562 cells with NALP13 antibody at 20 µg/mL.

Disclaimer

|            |  |
|------------|--|
| Disclaimer | Optimal dilutions/concentrations should be determined by the end user. The information provided is a guideline for product use. This product is for research use only. |
|------------|--|

For research use only. For additional information, visit ProSci's [Terms and Conditions Page](#).