

NALP7 Antibody

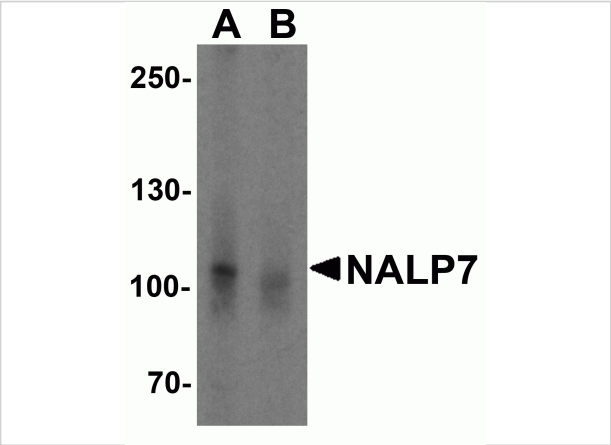
CATALOG NUMBER: 5963

Specifications

Host Species	Rabbit
Species Reactivity	Human
Immunogen	NALP7 antibody was raised against an 18 amino acid synthetic peptide near the amino terminus of human NALP7. The immunogen is located within amino acids 90 - 140 of NALP7.
Conjugate	Unconjugated
Tested Applications	ELISA, IF, IHC-P, WB
User Note	Optimal dilutions for each application to be determined by the researcher.

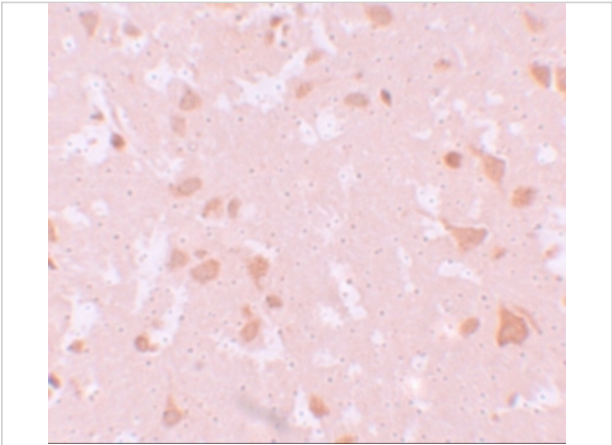
Properties

Purification	NALP7 Antibody is affinity chromatography purified via peptide column.
Clonality	Polyclonal
Isotype	IgG
Physical State	Liquid
Buffer	NALP7 Antibody is supplied in PBS containing 0.02% sodium azide.
Concentration	1 mg/mL
Storage Conditions	NALP7 antibody can be stored at 4°C for three months and -20°C, stable for up to one year. As with all antibodies care should be taken to avoid repeated freeze thaw cycles. Antibodies should not be exposed to prolonged high temperatures.



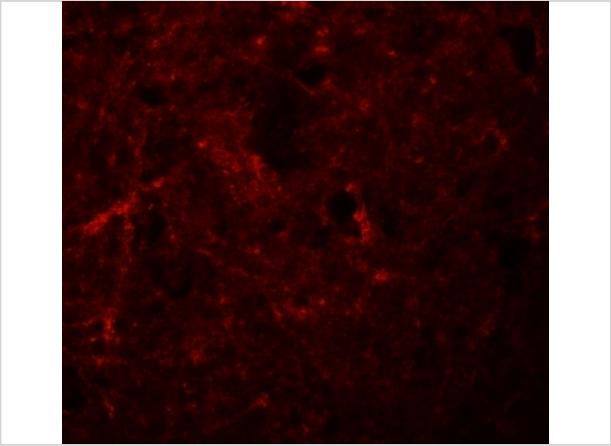
NALP7 Antibody 1

Western blot analysis of NALP7 in K562 cell lysate with NALP7 antibody at 2 µg/mL in (A) the absence and (B) the presence of blocking peptide.



NALP7 Antibody 2

Immunohistochemistry of NALP7 in human brain tissue with NALP7 antibody at 10 µg/mL.



NALP7 Antibody 3

Immunofluorescence of NALP7 in human brain tissue with NALP7 antibody at 20 µg/mL.

Disclaimer

Disclaimer	Optimal dilutions/concentrations should be determined by the end user. The information provided is a guideline for product use. This product is for research use only.
------------	--

For research use only. For additional information, visit ProSci's [Terms and Conditions Page](#).