

NOD5 Antibody

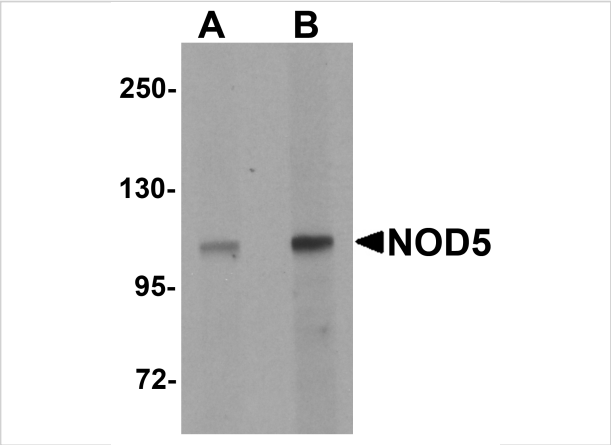
CATALOG NUMBER: 5953

Specifications

Host Species	Rabbit
Species Reactivity	Human, Mouse, Rat
Immunogen	NOD5 antibody was raised against a 14 amino acid synthetic peptide near the amino terminus of human NOD5. The immunogen is located within amino acids 70 - 120 of NOD5.
Conjugate	Unconjugated
Tested Applications	ELISA, IF, IHC-P, WB
User Note	Optimal dilutions for each application to be determined by the researcher.

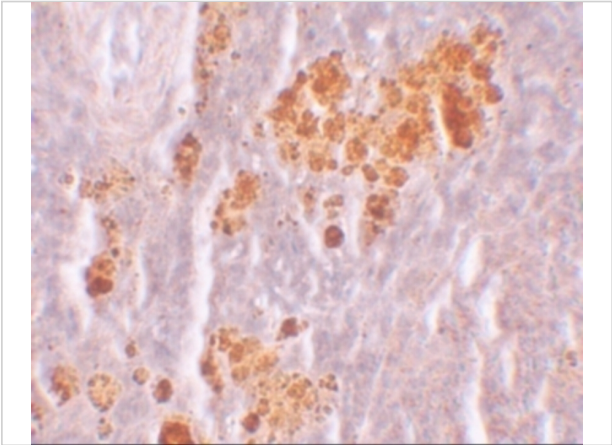
Properties

Purification	NOD5 Antibody is affinity chromatography purified via peptide column.
Clonality	Polyclonal
Isotype	IgG
Physical State	Liquid
Buffer	NOD5 Antibody is supplied in PBS containing 0.02% sodium azide.
Concentration	1 mg/mL
Storage Conditions	NOD5 antibody can be stored at 4°C for three months and -20°C, stable for up to one year. As with all antibodies care should be taken to avoid repeated freeze thaw cycles. Antibodies should not be exposed to prolonged high temperatures.



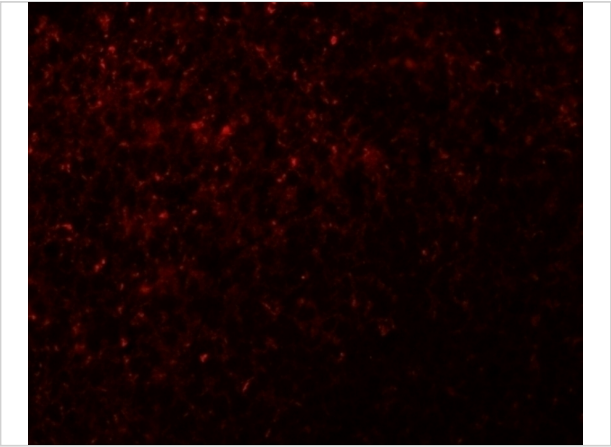
NOD5 Antibody 1

Western blot analysis of NOD5 in rat spleen tissue cell lysate with NOD5 antibody at (A) 1 and (B) 2 µg/mL.



NOD5 Antibody 2

Immunohistochemistry of NOD5 in rat spleen tissue with NOD5 antibody at 10 µg/mL.



NOD5 Antibody 3

Immunofluorescence of NOD5 in rat spleen tissue with NOD5 antibody at 20 µg/mL.

Disclaimer

Disclaimer	Optimal dilutions/concentrations should be determined by the end user. The information provided is a guideline for product use. This product is for research use only.
-------------------	--

For research use only. For additional information, visit ProSci's [Terms and Conditions Page](#).