

## YBX2 Antibody

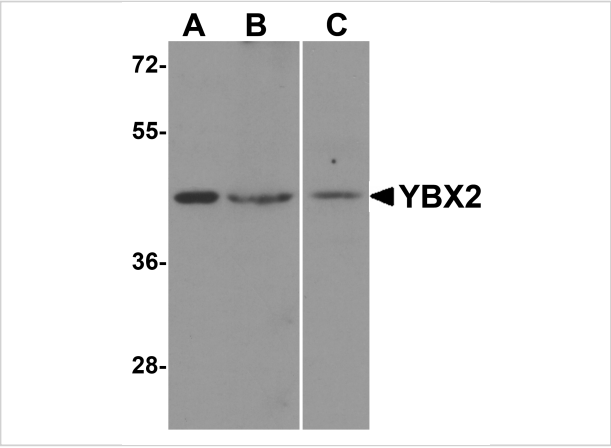
CATALOG NUMBER: 5885

### Specifications

Host Species	Rabbit
Species Reactivity	Human, Mouse, Rat
Immunogen	YBX2 antibody was raised against an 18 amino acid synthetic peptide near the carboxy end of human YBX2. The immunogen is located within amino acids 300 - 350 of YBX2.
Conjugate	Unconjugated
Tested Applications	ELISA, IF, IHC-P, WB
User Note	Optimal dilutions for each application to be determined by the researcher.

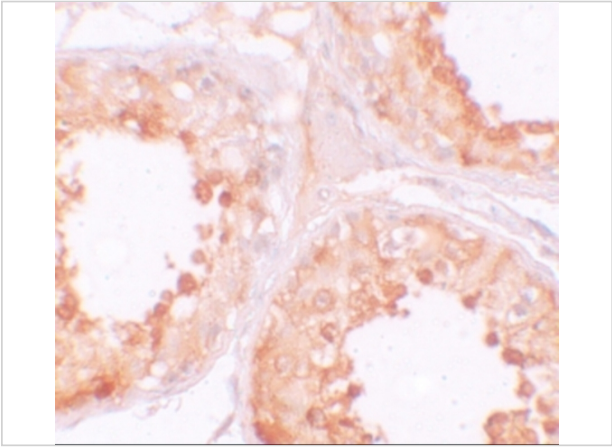
### Properties

Purification	YBX2 Antibody is affinity chromatography purified via peptide column.
Clonality	Polyclonal
Isotype	IgG
Physical State	Liquid
Buffer	YBX2 Antibody is supplied in PBS containing 0.02% sodium azide.
Concentration	1 mg/mL
Storage Conditions	YBX2 antibody can be stored at 4°C for three months and -20°C, stable for up to one year. As with all antibodies care should be taken to avoid repeated freeze thaw cycles. Antibodies should not be exposed to prolonged high temperatures.



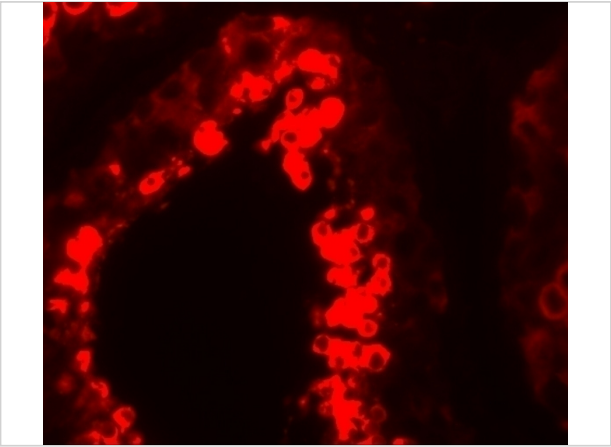
YBX2 Antibody 1

Western blot analysis of YBX2 in human testis tissue lysate with YBX2 antibody at (A) 1 and (B) 2  $\mu\text{g/mL}$ .



YBX2 Antibody 2

Immunohistochemistry of YBX2 in human testis tissue with YBX2 antibody at 10  $\mu\text{g/mL}$ .



YBX2 Antibody 3

Immunofluorescence of YBX2 in human testis tissue with YBX2 antibody at 20  $\mu\text{g/mL}$ .

Disclaimer

Disclaimer	Optimal dilutions/concentrations should be determined by the end user. The information provided is a guideline for product use. This product is for research use only.
------------	--

For research use only. For additional information, visit ProSci's [Terms and Conditions Page](#).