

SESTD1 Antibody

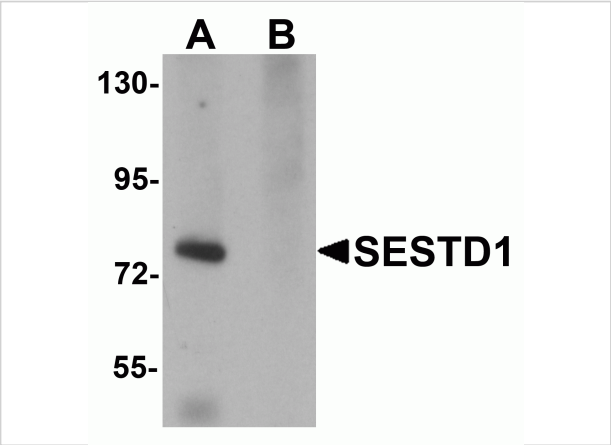
CATALOG NUMBER: 5877

Specifications

Host Species	Rabbit
Species Reactivity	Human, Mouse, Rat
Immunogen	SESTD1 antibody was raised against a 15 amino acid synthetic peptide near the carboxy terminus of human SESTD1. The immunogen is located within the last 50 amino acids of SESTD1.
Conjugate	Unconjugated
Tested Applications	ELISA, IF, IHC-P, WB
User Note	Optimal dilutions for each application to be determined by the researcher.

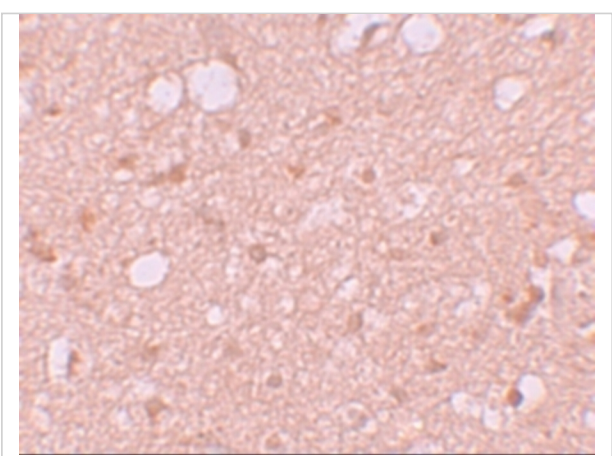
Properties

Purification	SESTD1 Antibody is affinity chromatography purified via peptide column.
Clonality	Polyclonal
Isotype	IgG
Physical State	Liquid
Buffer	SESTD1 Antibody is supplied in PBS containing 0.02% sodium azide.
Concentration	1 mg/mL
Storage Conditions	SESTD1 antibody can be stored at 4°C for three months and -20°C, stable for up to one year. As with all antibodies care should be taken to avoid repeated freeze thaw cycles. Antibodies should not be exposed to prolonged high temperatures.



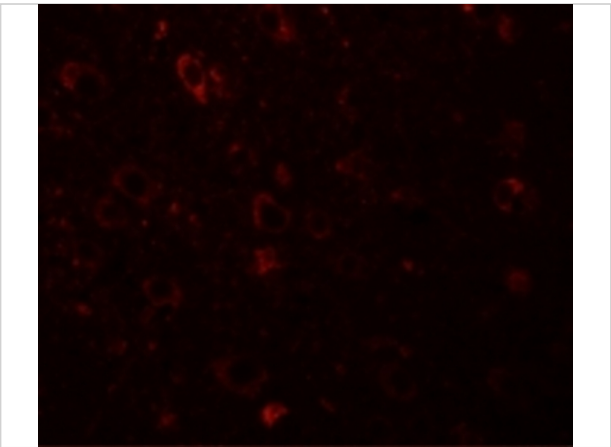
SESTD1 Antibody 1

Western blot analysis of SESTD1 in rat brain tissue lysate with SESTD1 antibody at 1 µg/mL in (A) the absence and (B) the presence of blocking peptide.



SESTD1 Antibody 2

Immunohistochemistry of SESTD1 in human brain tissue with SESTD1 antibody at 5 µg/mL.



SESTD1 Antibody 3

Immunofluorescence of SESTD1 in Human Brain cells with SESTD1 antibody at 20 µg/mL.

Disclaimer

Disclaimer	Optimal dilutions/concentrations should be determined by the end user. The information provided is a guideline for product use. This product is for research use only.
------------	--

For research use only. For additional information, visit ProSci's [Terms and Conditions Page](#).