



ProSci Incorporated
12170 Flint Place
Poway, CA 92064, USA
prosci-inc.com

P: +1 (888) 513-9525
Local: +1 (858) 513-2638
Fax: +1 (858) 513-2692

customercare@prosci-inc.com
techsupport@prosci-inc.com

VENTX Antibody

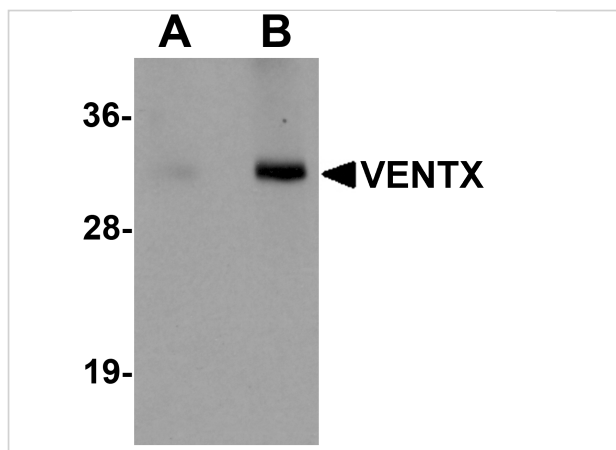
CATALOG NUMBER: 5863

Specifications

Host Species	Rabbit
Species Reactivity	Human, Mouse, Rat
Homology	Predicted species reactivity based on immunogen sequence: Bovine: (92%), Chicken: (92%)
Immunogen	VENTX antibody was raised against a 16 amino acid synthetic peptide near the center of human VENTX. The immunogen is located within amino acids 120 - 170 of VENTX.
Conjugate	Unconjugated
Tested Applications	ELISA, IF, IHC-P, WB
User Note	Optimal dilutions for each application to be determined by the researcher.

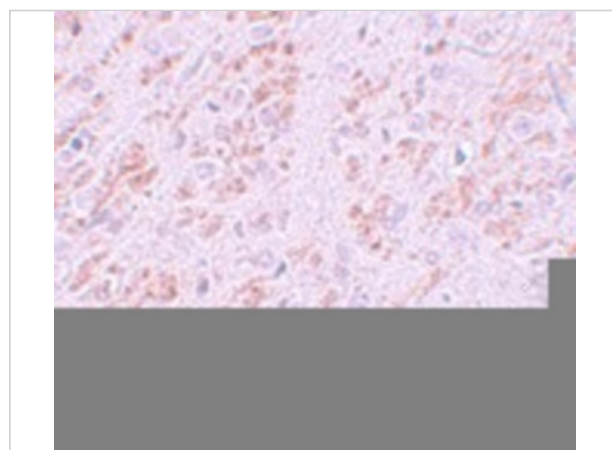
Properties

Purification	VENTX Antibody is affinity chromatography purified via peptide column.
Clonality	Polyclonal
Isotype	IgG
Physical State	Liquid
Buffer	VENTX Antibody is supplied in PBS containing 0.02% sodium azide.
Concentration	1 mg/mL
Storage Conditions	VENTX antibody can be stored at 4°C for three months and -20°C, stable for up to one year. As with all antibodies care should be taken to avoid repeated freeze thaw cycles. Antibodies should not be exposed to prolonged high temperatures.



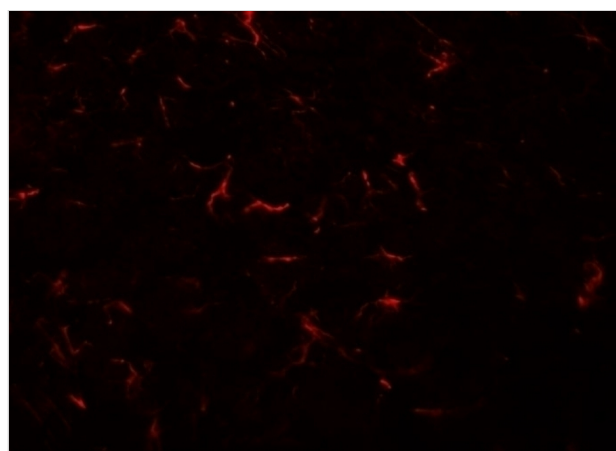
VENTX Antibody 1

Western blot analysis of VENTX in mouse brain tissue lysate with VENTX antibody at (A) 1 and (B) 2 $\mu\text{g/mL}$.



VENTX Antibody 2

Immunohistochemistry of VENTX in rat brain tissue with VENTX antibody at 5 $\mu\text{g/mL}$.



VENTX Antibody 3

Immunofluorescence of VENTX in rat brain tissue with VENTX antibody at 20 $\mu\text{g/mL}$.

Disclaimer

Disclaimer

Optimal dilutions/concentrations should be determined by the end user. The information provided is a guideline for product use. This product is for research use only.

For research use only. For additional information, visit ProSci's [Terms and Conditions Page](#).