

## CaBP7 Antibody

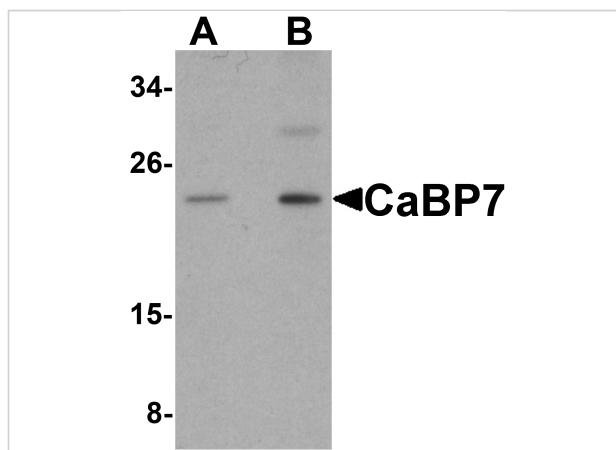
CATALOG NUMBER: 5859

### Specifications

Host Species	Rabbit
Species Reactivity	Human, Mouse, Rat
Immunogen	CaBP7 antibody was raised against a 15 amino acid synthetic peptide near the amino terminus of human CaBP7. The immunogen is located within the first 50 amino acids of CaBP7.
Conjugate	Unconjugated
Tested Applications	ELISA, ICC, IF, WB
User Note	Optimal dilutions for each application to be determined by the researcher.

### Properties

Purification	CaBP7 Antibody is affinity chromatography purified via peptide column.
Clonality	Polyclonal
Isotype	IgG
Physical State	Liquid
Buffer	CaBP7 Antibody is supplied in PBS containing 0.02% sodium azide.
Concentration	1 mg/mL
Storage Conditions	CaBP7 antibody can be stored at 4°C for three months and -20°C, stable for up to one year. As with all antibodies care should be taken to avoid repeated freeze thaw cycles. Antibodies should not be exposed to prolonged high temperatures.



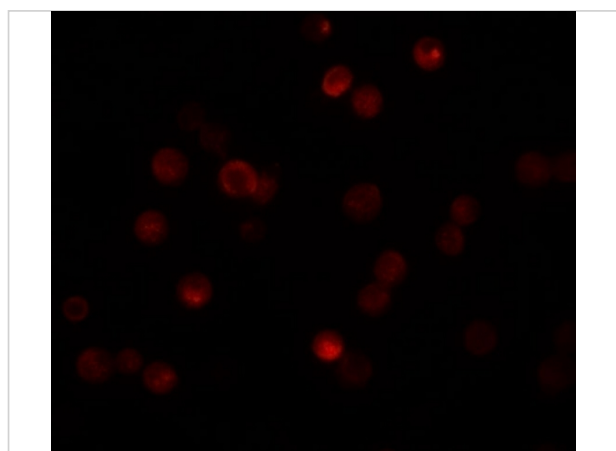
### CaBP7 Antibody 1

Western blot analysis of CaBP7 in HeLa cell lysate with CaBP7 antibody at (A) 1 and (B) 2  $\mu\text{g/mL}$ .



### CaBP7 Antibody 2

Immunocytochemistry of CaBP7 in HeLa cells with CaBP7 antibody at 4  $\mu\text{g/mL}$ .



### CaBP7 Antibody 3

Immunofluorescence of CaBP7 in HeLa cells with CaBP7 antibody at 20  $\mu\text{g/mL}$ .

## Disclaimer

#### Disclaimer

Optimal dilutions/concentrations should be determined by the end user. The information provided is a guideline for product use. This product is for research use only.

For research use only. For additional information, visit ProSci's [Terms and Conditions Page](#).