

ATP11A Antibody

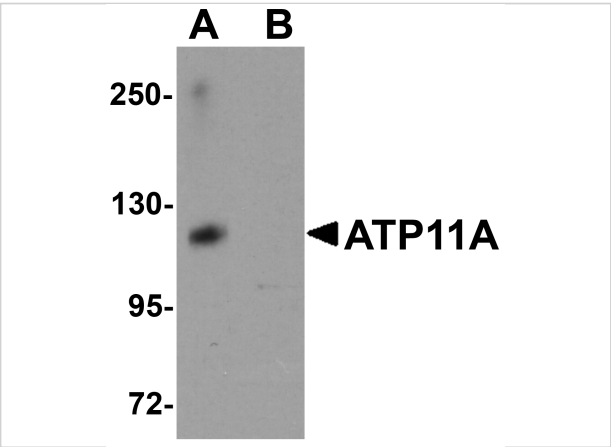
CATALOG NUMBER: 5855

Specifications

Host Species	Rabbit
Species Reactivity	Human, Mouse, Rat
Immunogen	ATP11A antibody was raised against a 19 amino acid synthetic peptide near the amino terminus of human ATP11A. The immunogen is located within the first 50 amino acids of ATP11A.
Conjugate	Unconjugated
Tested Applications	ELISA, ICC, IF, WB
User Note	Optimal dilutions for each application to be determined by the researcher.

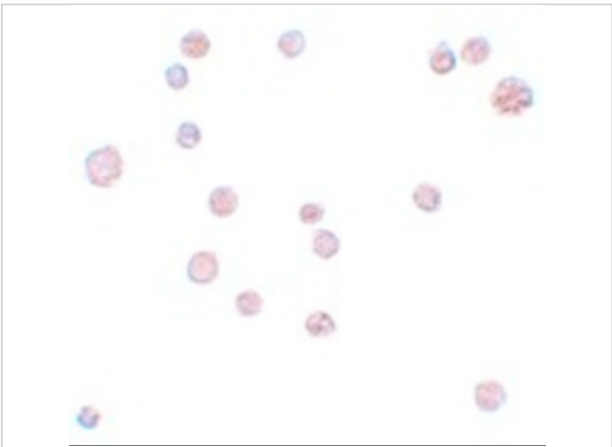
Properties

Purification	ATP11A Antibody is affinity chromatography purified via peptide column.
Clonality	Polyclonal
Isotype	IgG
Physical State	Liquid
Buffer	ATP11A Antibody is supplied in PBS containing 0.02% sodium azide.
Concentration	1 mg/mL
Storage Conditions	ATP11A antibody can be stored at 4°C for three months and -20°C, stable for up to one year. As with all antibodies care should be taken to avoid repeated freeze thaw cycles. Antibodies should not be exposed to prolonged high temperatures.



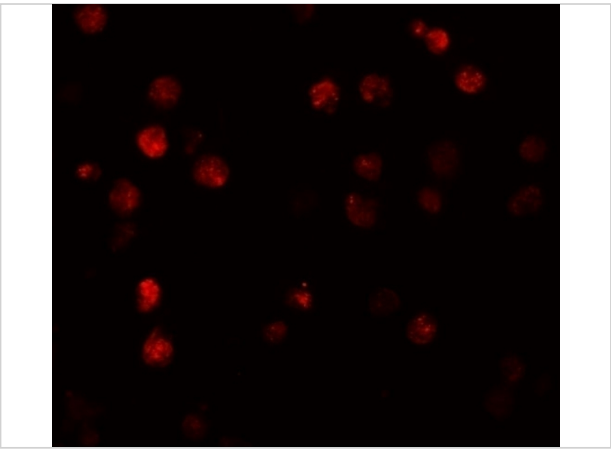
ATP11A Antibody 1

Western blot analysis of ATP11A in K562 cell tissue lysate with ATP11A antibody at 1 $\mu\text{g/mL}$ in (A) the absence and (B) the presence of blocking peptide.



ATP11A Antibody 2

Immunocytochemistry of ATP11A in K562 cells with ATP11A antibody at 10 $\mu\text{g/mL}$.



ATP11A Antibody 3

Immunofluorescence of ATP11A in K562 cells with ATP11A antibody at 20 $\mu\text{g/mL}$.

Disclaimer

Disclaimer	Optimal dilutions/concentrations should be determined by the end user. The information provided is a guideline for product use. This product is for research use only.
------------	--

For research use only. For additional information, visit ProSci's [Terms and Conditions Page](#).