

## SCUBE1 Antibody

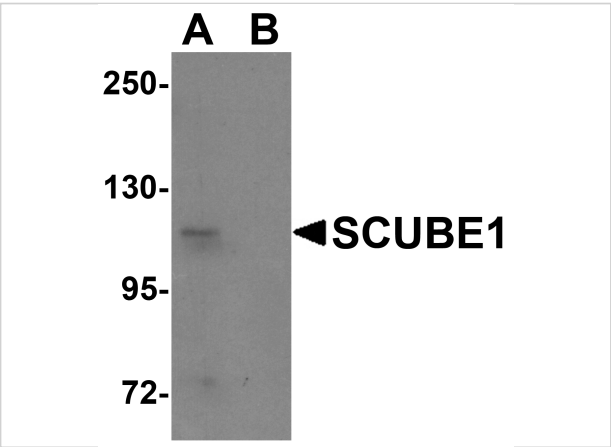
CATALOG NUMBER: 5843

### Specifications

Host Species	Rabbit
Species Reactivity	Human
Homology	Predicted species reactivity based on immunogen sequence: Mouse: (93%)
Immunogen	SCUBE1 antibody was raised against a 14 amino acid synthetic peptide near the center of human SCUBE1. The immunogen is located within amino acids 460 - 510 of SCUBE1.
Conjugate	Unconjugated
Tested Applications	ELISA, ICC, IF, WB
User Note	Optimal dilutions for each application to be determined by the researcher.

### Properties

Purification	SCUBE1 Antibody is affinity chromatography purified via peptide column.
Clonality	Polyclonal
Isotype	IgG
Physical State	Liquid
Buffer	SCUBE1 Antibody is supplied in PBS containing 0.02% sodium azide.
Concentration	1 mg/mL
Storage Conditions	SCUBE1 antibody can be stored at 4°C for three months and -20°C, stable for up to one year. As with all antibodies care should be taken to avoid repeated freeze thaw cycles. Antibodies should not be exposed to prolonged high temperatures.



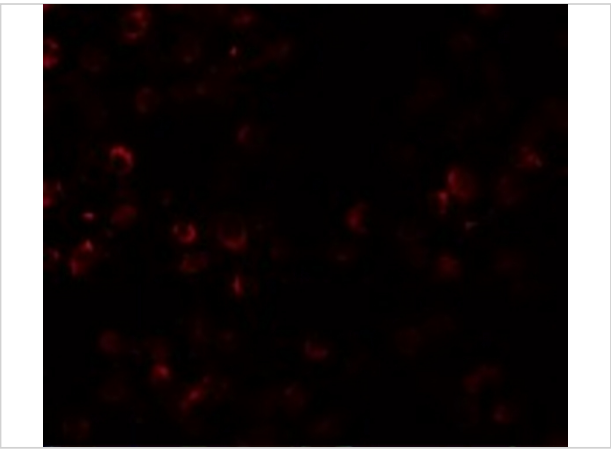
SCUBE1 Antibody 1

Western blot analysis of SCUBE1 in Daudi cell lysate with SCUBE1 antibody at 1 µg/mL in (A) the absence and (B) the presence of blocking peptide.



SCUBE1 Antibody 2

Immunocytochemistry of SCUBE1 in Daudi cells with SCUBE1 antibody at 20 µg/mL.



SCUBE1 Antibody 3

Immunofluorescence of SCUBE1 in Daudi cells with SCUBE1 antibody at 20 µg/mL.

Disclaimer

Disclaimer	Optimal dilutions/concentrations should be determined by the end user. The information provided is a guideline for product use. This product is for research use only.
------------	--

For research use only. For additional information, visit ProSci's [Terms and Conditions Page](#).