

ZC3HAV1 Antibody

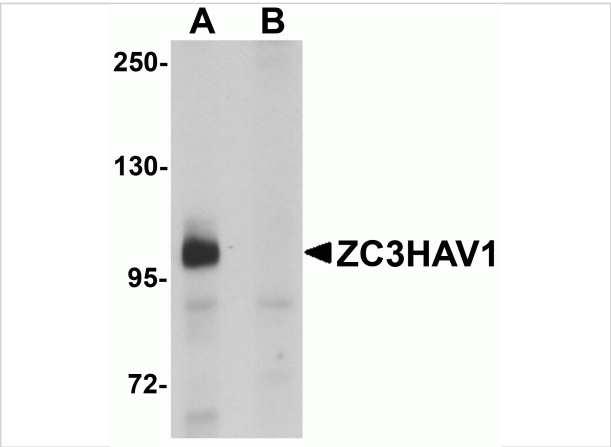
CATALOG NUMBER: 5839

Specifications

Host Species	Rabbit
Species Reactivity	Human
Immunogen	ZC3HAV1 antibody was raised against a 14 amino acid synthetic peptide near the carboxy terminus of human ZC3HAV1. The immunogen is located within amino acids 680 - 730 of ZC3HAV1.
Conjugate	Unconjugated
Tested Applications	ELISA, ICC, IF, WB
User Note	Optimal dilutions for each application to be determined by the researcher.

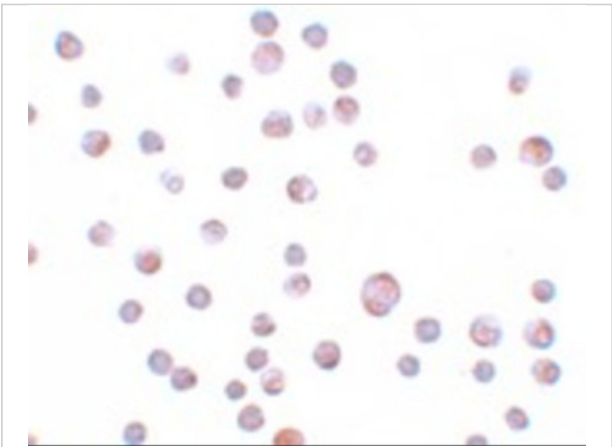
Properties

Purification	ZC3HAV1 Antibody is affinity chromatography purified via peptide column.
Clonality	Polyclonal
Isotype	IgG
Physical State	Liquid
Buffer	ZC3HAV1 Antibody is supplied in PBS containing 0.02% sodium azide.
Concentration	1 mg/mL
Storage Conditions	ZC3HAV1 antibody can be stored at 4°C for three months and -20°C, stable for up to one year. As with all antibodies care should be taken to avoid repeated freeze thaw cycles. Antibodies should not be exposed to prolonged high temperatures.



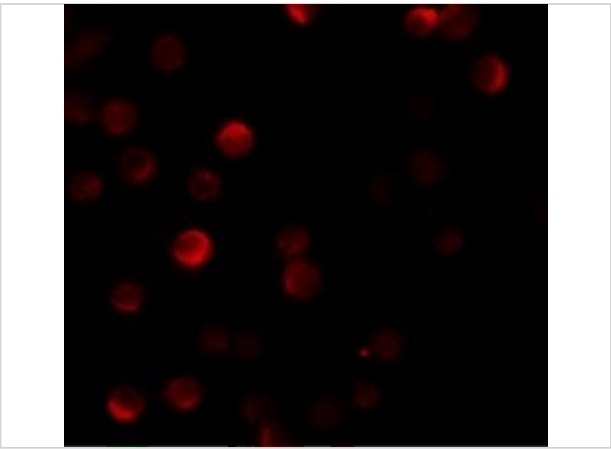
ZC3HAV1 Antibody 1

Western blot analysis of ZC3HAV1 in HeLa cell lysate with ZC3HAV1 antibody at 1µg/mL in (A) the absence and (B) the presence of blocking peptide.



ZC3HAV1 Antibody 2

Immunocytochemistry of ZC3HAV1 in HeLa cells with ZC3HAV1 antibody at 20 µg/mL.



ZC3HAV1 Antibody 3

Immunofluorescence of ZC3HAV1 in HeLa cells with ZC3HAV1 antibody at 20 µg/mL.

Disclaimer

Disclaimer	Optimal dilutions/concentrations should be determined by the end user. The information provided is a guideline for product use. This product is for research use only.
-------------------	--

For research use only. For additional information, visit ProSci's [Terms and Conditions Page](#).