

ZEB1 Antibody

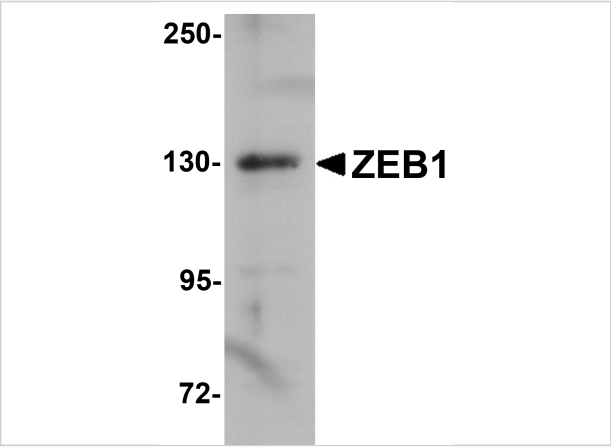
CATALOG NUMBER: 5825

Specifications

Host Species	Rabbit
Species Reactivity	Human
Immunogen	ZEB1 antibody was raised against a 15 amino acid synthetic peptide near the center of human ZEB1. The immunogen is located within amino acids 530 - 580 of ZEB1.
Conjugate	Unconjugated
Tested Applications	ELISA, ICC, IF, IHC-P, WB
User Note	Optimal dilutions for each application to be determined by the researcher.
Specificity	Multiple isoforms of ZEB1 are known to exist.
Predicted Molecular Weight	Predicted: 124 kDa Observed: 130 kDa

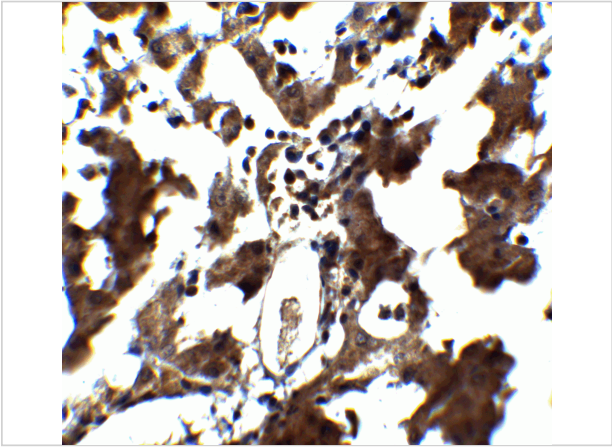
Properties

Purification	ZEB1 Antibody is affinity chromatography purified via peptide column.
Clonality	Polyclonal
Isotype	IgG
Physical State	Liquid
Buffer	ZEB1 Antibody is supplied in PBS containing 0.02% sodium azide.
Concentration	1 mg/mL
Storage Conditions	ZEB1 antibody can be stored at 4°C up to one year. Antibodies should not be exposed to prolonged high temperatures.



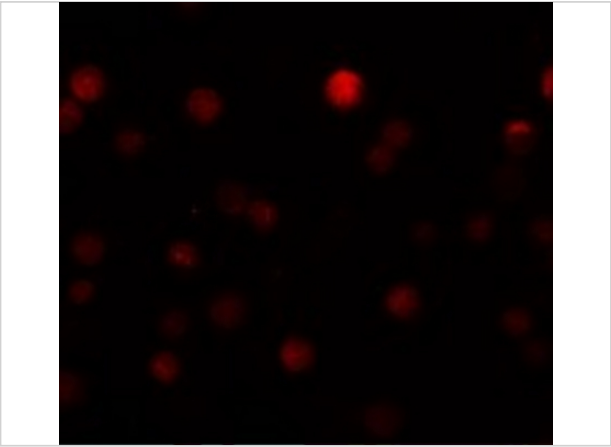
ZEB1 Antibody 1

Western blot analysis of ZEB1 in HeLa cell lysate with ZEB1 antibody at 1 µg/mL.



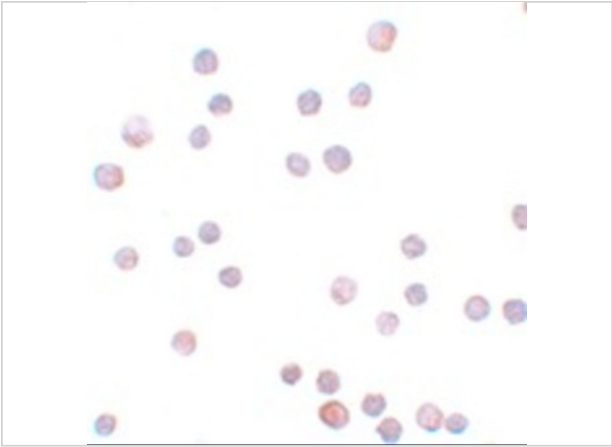
ZEB1 Antibody 2

Immunohistochemistry of ZEB1 in human liver tissue with ZEB1 antibody at 5 µg/mL.



ZEB1 Antibody 3

Immunofluorescence of ZEB1 in HeLa cells with ZEB1 antibody at 20 µg/mL.



ZEB1 Antibody 4

Immunocytochemistry of ZEB1 in HeLa cells with ZEB1 antibody at 20 µg/mL.

Disclaimer

Disclaimer	Optimal dilutions/concentrations should be determined by the end user. The information provided is a guideline for product use. This product is for research use only.
-------------------	--

For research use only. For additional information, visit ProSci's [Terms and Conditions Page](#).