

## IDH2 Antibody

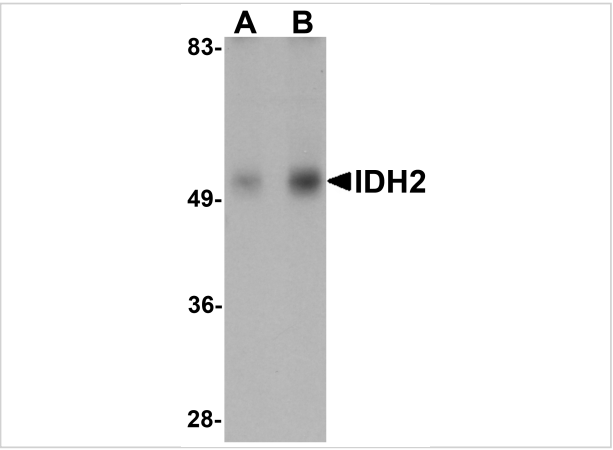
CATALOG NUMBER: 5821

### Specifications

Host Species	Rabbit
Species Reactivity	Human, Mouse, Rat
Homology	Predicted species reactivity based on immunogen sequence: Bovine: (88%)
Immunogen	IDH2 antibody was raised against a 17 amino acid synthetic peptide near the amino terminus of human IDH2. The immunogen is located within the first 50 amino acids of IDH2.
Conjugate	Unconjugated
Tested Applications	ELISA, IF, IHC-P, WB
User Note	Optimal dilutions for each application to be determined by the researcher.

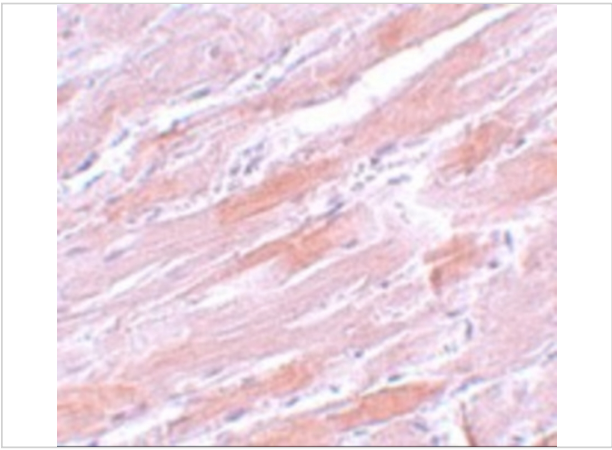
### Properties

Purification	IDH2 Antibody is affinity chromatography purified via peptide column.
Clonality	Polyclonal
Isotype	IgG
Physical State	Liquid
Buffer	IDH2 Antibody is supplied in PBS containing 0.02% sodium azide.
Concentration	1 mg/mL
Storage Conditions	IDH2 antibody can be stored at 4°C for three months and -20°C, stable for up to one year. As with all antibodies care should be taken to avoid repeated freeze thaw cycles. Antibodies should not be exposed to prolonged high temperatures.



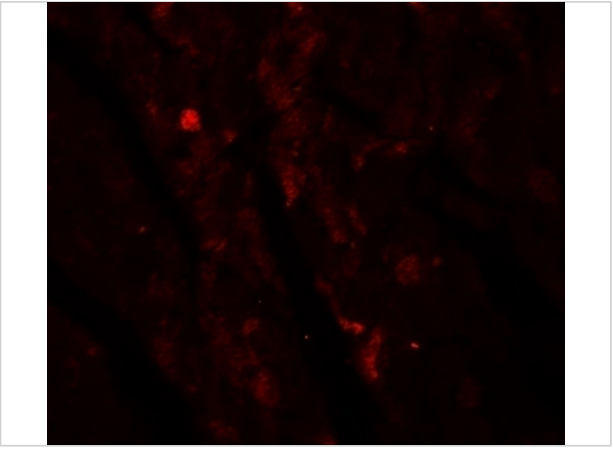
**IDH2 Antibody 1**

Western blot analysis of IDH2 in human heart tissue lysate with IDH2 antibody at (A) 1 and (B) 2  $\mu\text{g/mL}$ .



**IDH2 Antibody 2**

Immunohistochemistry of IDH2 in mouse heart tissue with IDH2 antibody at 5  $\mu\text{g/mL}$ .



**IDH2 Antibody 3**

Immunofluorescence of IDH2 in mouse heart tissue with IDH2 antibody at 20  $\mu\text{g/mL}$ .

**Disclaimer**

<b>Disclaimer</b>	Optimal dilutions/concentrations should be determined by the end user. The information provided is a guideline for product use. This product is for research use only.
-------------------	--

For research use only. For additional information, visit ProSci's [Terms and Conditions Page](#).