

IFITM1 Antibody

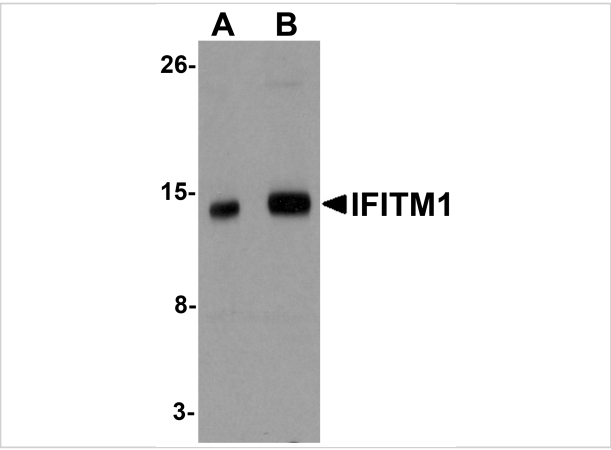
CATALOG NUMBER: 5807

Specifications

Host Species	Rabbit
Species Reactivity	Human, Mouse, Rat
Immunogen	IFITM1 antibody was raised against a 16 amino acid synthetic peptide near the center of human IFITM1. The immunogen is located within amino acids 40 - 90 of IFITM1.
Conjugate	Unconjugated
Tested Applications	ELISA, ICC, IF, WB
User Note	Optimal dilutions for each application to be determined by the researcher.
Predicted Molecular Weight	Predicted: 14 kDa Observed: 14 kDa

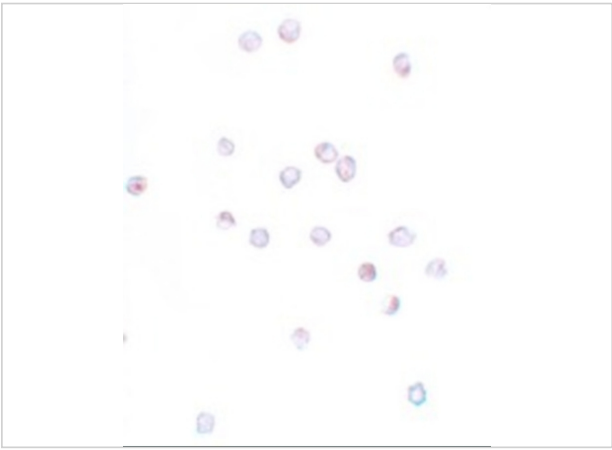
Properties

Purification	IFITM1 Antibody is affinity chromatography purified via peptide column.
Clonality	Polyclonal
Isotype	IgG
Physical State	Liquid
Buffer	IFITM1 Antibody is supplied in PBS containing 0.02% sodium azide.
Concentration	1 mg/mL
Storage Conditions	IFITM1 antibody can be stored at 4°C for three months and -20°C, stable for up to one year. As with all antibodies care should be taken to avoid repeated freeze thaw cycles. Antibodies should not be exposed to prolonged high temperatures.



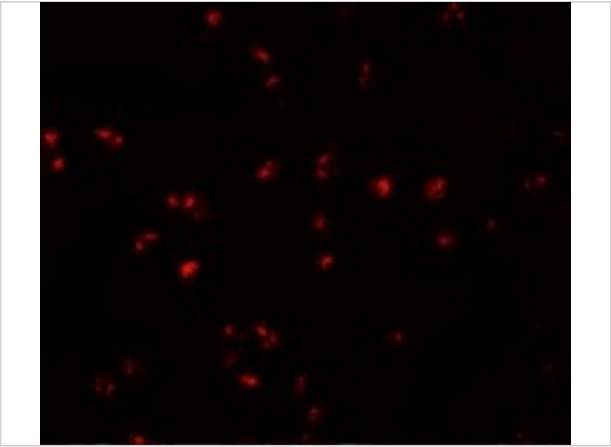
IFITM1 Antibody 1

Western blot analysis of IFITM1 in 3T3 cell lysate with IFITM1 antibody at (A) 1 and (B) 2 µg/mL.



IFITM1 Antibody 2

Immunocytochemistry of IFITM1 in Jurkat cells with IFITM1 antibody at 20 µg/mL.



IFITM1 Antibody 3

Immunofluorescence of IFITM1 in Jurkat cells with IFITM1 antibody at 20 µg/mL.

Disclaimer

Disclaimer	Optimal dilutions/concentrations should be determined by the end user. The information provided is a guideline for product use. This product is for research use only.
-------------------	--

For research use only. For additional information, visit ProSci's [Terms and Conditions Page](#).