

USP10 Antibody

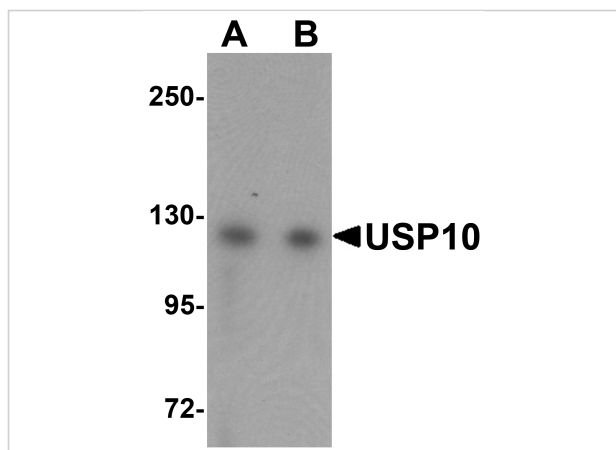
CATALOG NUMBER: 5803

Specifications

| | |
|---------------------|--|
| Host Species | Rabbit |
| Species Reactivity | Human, Mouse |
| Homology | Predicted species reactivity based on immunogen sequence: Bovine: (80%), Rat: (91%), Chicken: (89%) |
| Immunogen | USP10 antibody was raised against a 16 amino acid synthetic peptide near the amino terminus of human USP10. The immunogen is located within amino acids 30 - 80 of USP10. |
| Conjugate | Unconjugated |
| Tested Applications | ELISA, ICC, IF, WB |
| User Note | Optimal dilutions for each application to be determined by the researcher. |

Properties

| | |
|--------------------|---|
| Purification | USP10 Antibody is affinity chromatography purified via peptide column. |
| Clonality | Polyclonal |
| Isotype | IgG |
| Physical State | Liquid |
| Buffer | USP10 Antibody is supplied in PBS containing 0.02% sodium azide. |
| Concentration | 1 mg/mL |
| Storage Conditions | USP10 antibody can be stored at 4°C for three months and -20°C, stable for up to one year. As with all antibodies care should be taken to avoid repeated freeze thaw cycles. Antibodies should not be exposed to prolonged high temperatures. |



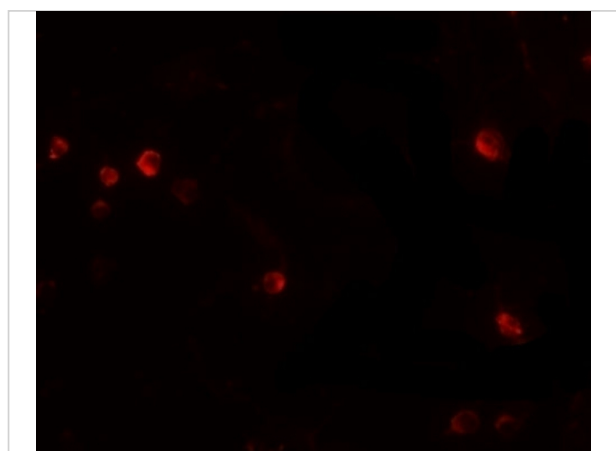
USP10 Antibody 1

Western blot analysis of USP10 in Jurkat cell lysate with USP10 antibody at (A) 1 and (B) 2 $\mu\text{g/mL}$.



USP10 Antibody 2

Immunocytochemistry of USP10 in Jurkat cells with USP10 antibody at 20 $\mu\text{g/mL}$.



USP10 Antibody 3

Immunofluorescence of USP10 in Jurkat cells with USP10 antibody at 20 $\mu\text{g/mL}$.

Disclaimer

Disclaimer

Optimal dilutions/concentrations should be determined by the end user. The information provided is a guideline for product use. This product is for research use only.

For research use only. For additional information, visit ProSci's [Terms and Conditions Page](#).