

ATG3 Antibody

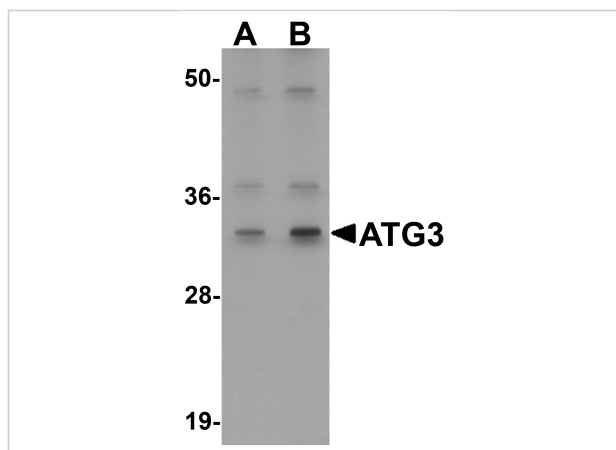
CATALOG NUMBER: 5795

Specifications

Host Species	Rabbit
Species Reactivity	Human, Mouse, Rat
Homology	Predicted species reactivity based on immunogen sequence: Bovine: (100%)
Immunogen	ATG3 antibody was raised against an 18 amino acid synthetic peptide near the center of human ATG3. The immunogen is located within amino acids 180 - 230 of ATG3.
Conjugate	Unconjugated
Tested Applications	ELISA, IF, IHC-P, WB
User Note	Optimal dilutions for each application to be determined by the researcher.

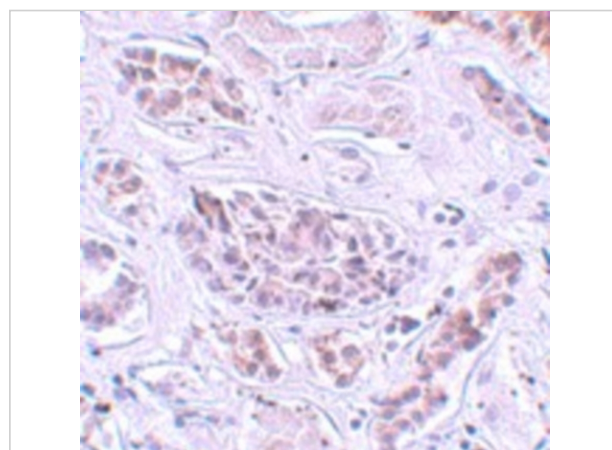
Properties

Purification	ATG3 Antibody is affinity chromatography purified via peptide column.
Clonality	Polyclonal
Isotype	IgG
Physical State	Liquid
Buffer	ATG3 Antibody is supplied in PBS containing 0.02% sodium azide.
Concentration	1 mg/mL
Storage Conditions	ATG3 antibody can be stored at 4°C for three months and -20°C, stable for up to one year. As with all antibodies care should be taken to avoid repeated freeze thaw cycles. Antibodies should not be exposed to prolonged high temperatures.



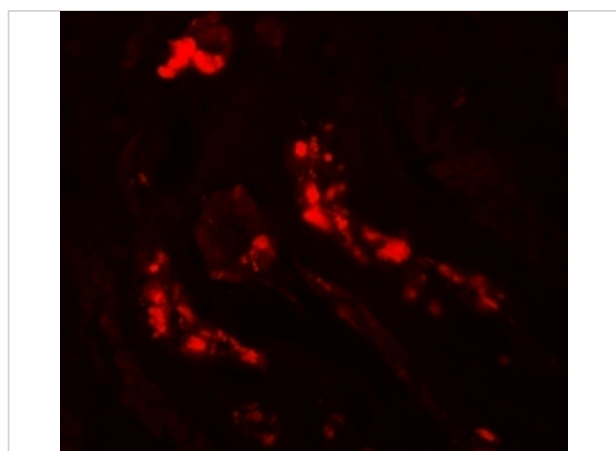
ATG3 Antibody 1

Western blot analysis of ATG3 in Mouse kidney tissue Lysate with ATG3 antibody at (A) 1 and (B) 2 $\mu\text{g/mL}$.



ATG3 Antibody 2

Immunohistochemistry of ATG3 in human kidney tissue with ATG3 antibody at 5 $\mu\text{g/mL}$.



ATG3 Antibody 3

Immunofluorescence of ATG3 in human kidney with ATG3 antibody at 20 $\mu\text{g/mL}$.

Disclaimer

Disclaimer

Optimal dilutions/concentrations should be determined by the end user. The information provided is a guideline for product use. This product is for research use only.

For research use only. For additional information, visit ProSci's [Terms and Conditions Page](#).