

## B-raf Antibody

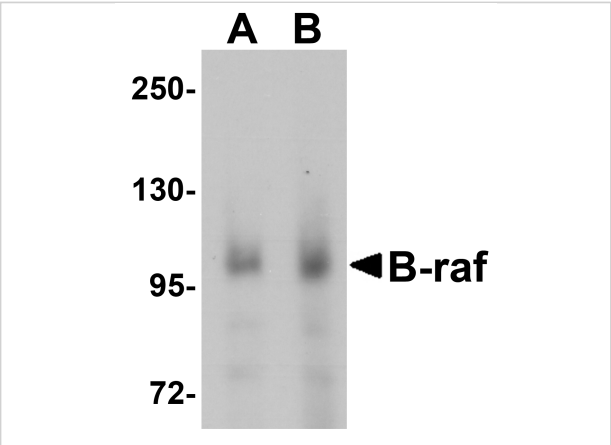
CATALOG NUMBER: 5777

### Specifications

Host Species	Chicken
Species Reactivity	Human, Mouse, Rat
Homology	Predicted species reactivity based on immunogen sequence: Chicken: (93%)
Immunogen	Anti-B-raf antibody ( <b>5777</b> ) was raised against a peptide corresponding to 18 amino acids near the center of human B-raf. The immunogen is located within amino acids 330 - 380 of B-raf.
Conjugate	Unconjugated
Tested Applications	ELISA, WB
User Note	Optimal dilutions for each application to be determined by the researcher.
Predicted Molecular Weight	Predicted: 94kD Observed: 94 kD

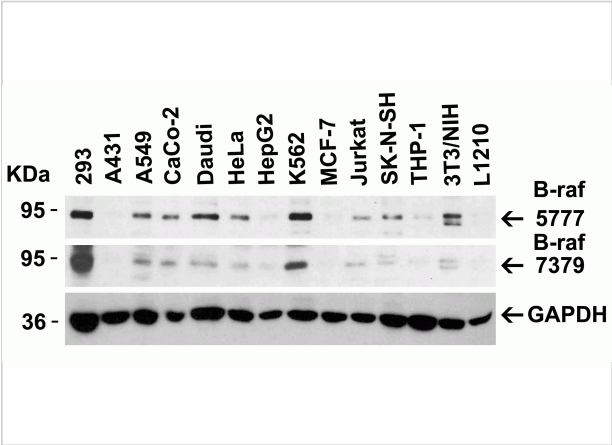
### Properties

Purification	B-raf Antibody is affinity chromatography purified via peptide column.
Clonality	Polyclonal
Isotype	IgY
Physical State	Liquid
Buffer	B-raf Antibody is supplied in PBS containing 0.02% sodium azide.
Concentration	1 mg/mL
Storage Conditions	B-raf antibody can be stored at 4°C for three months and -20°C, stable for up to one year. As with all antibodies care should be taken to avoid repeated freeze thaw cycles. Antibodies should not be exposed to prolonged high temperatures.



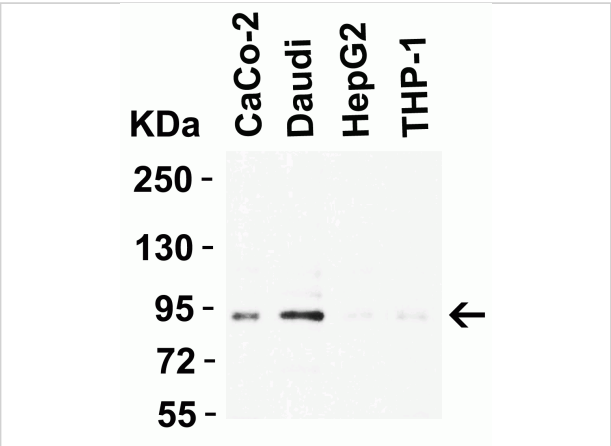
### B-raf Antibody 1

**Figure 1 Western Blot Validation in Human Brain Tissue**  
 Loading: 15 µg of lysates per lane. Antibodies: B-raf 5777, (A: 1 µg/mL; B: 2 µg/mL), 1h incubation at RT in 5% NFDM/TBST. Sec...



### B-raf Antibody 2

**Figure 2 Independent Antibody Validation (IAV) via Protein Expression Profile in Cell Lines**  
 Loading: 15 µg of lysates per lane. Antibodies: B-raf 5777, (0.5 µg/mL), B-raf 7379, (...)



### B-raf Antibody 3

**Figure 3 Western Blot Validation in Human Cell Lines**  
 Loading: 15 µg of lysates per lane. Antibodies: B-raf 5777, (0.5 µg/mL), 1h incubation at RT in 5% NFDM/TBST. Secondary: Goat ...

## Disclaimer

Disclaimer	Optimal dilutions/concentrations should be determined by the end user. The information provided is a guideline for product use. This product is for research use only.
------------	--

For research use only. For additional information, visit ProSci's [Terms and Conditions Page](#).