

SIRT4 Antibody

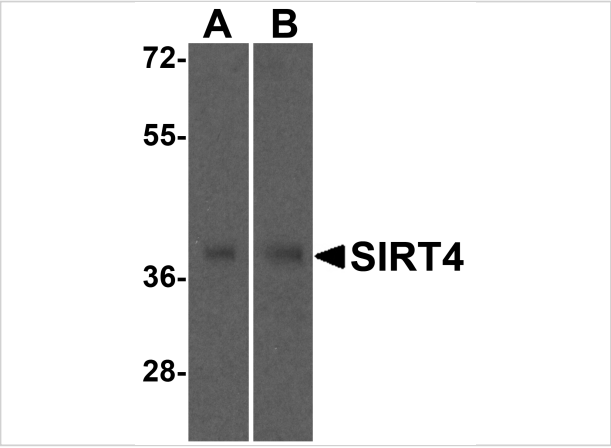
CATALOG NUMBER: 5769

Specifications

Host Species	Chicken
Species Reactivity	Human, Mouse, Rat
Homology	Predicted species reactivity based on immunogen sequence: Bovine: (100%)
Immunogen	SIRT4 antibody was raised against a 17 amino acid synthetic peptide near the amino terminus of human SIRT4. The immunogen is located within amino acids 80 - 130 of SIRT4.
Conjugate	Unconjugated
Tested Applications	ELISA, WB
User Note	Optimal dilutions for each application to be determined by the researcher.
Predicted Molecular Weight	Predicted: 37 kDa Observed: 40 kDa

Properties

Purification	SIRT4 Antibody is affinity chromatography purified via peptide column.
Clonality	Polyclonal
Isotype	IgY
Physical State	Liquid
Buffer	SIRT4 Antibody is supplied in PBS containing 0.02% sodium azide.
Concentration	1 mg/mL
Storage Conditions	SIRT4 antibody can be stored at 4°C for three months and -20°C, stable for up to one year. As with all antibodies care should be taken to avoid repeated freeze thaw cycles. Antibodies should not be exposed to prolonged high temperatures.



SIRT4 Antibody 1

Western blot analysis of SIRT4 in (A) human and (B) mouse liver tissue lysate with SIRT4 antibody at 0.5 µg/mL

Disclaimer

Disclaimer	Optimal dilutions/concentrations should be determined by the end user. The information provided is a guideline for product use. This product is for research use only.
------------	--

For research use only. For additional information, visit ProSci's [Terms and Conditions Page](#).