

SIRT1 Antibody

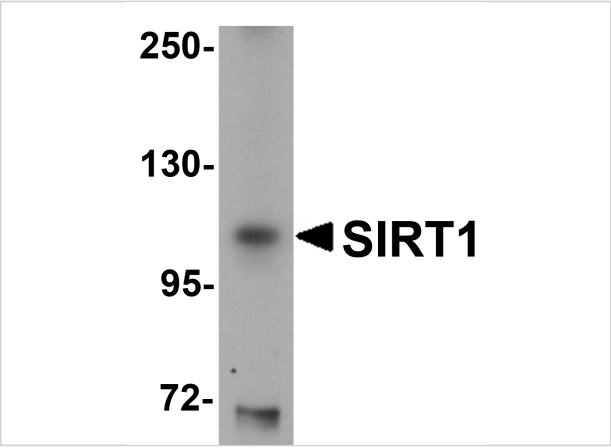
CATALOG NUMBER: 5765

Specifications

Host Species	Chicken
Species Reactivity	Human, Mouse, Rat
Immunogen	SIRT1 antibody was raised against a 19 amino acid synthetic peptide near the amino terminus of human SIRT1. The immunogen is located within the first 50 amino acids of SIRT1.
Conjugate	Unconjugated
Tested Applications	ELISA, IF, WB
User Note	Optimal dilutions for each application to be determined by the researcher.

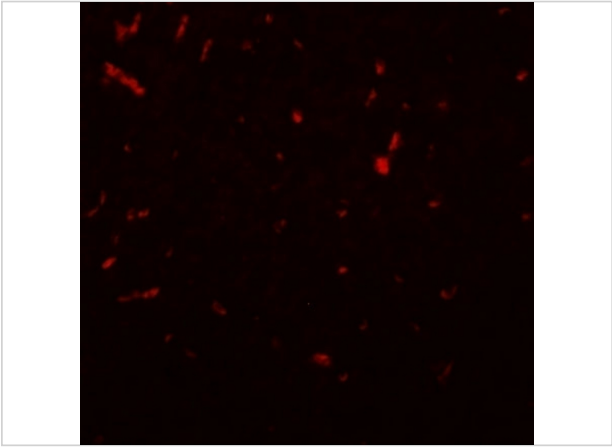
Properties

Purification	SIRT1 Antibody is affinity chromatography purified via peptide column.
Clonality	Polyclonal
Isotype	IgY
Physical State	Liquid
Buffer	SIRT1 Antibody is supplied in PBS containing 0.02% sodium azide.
Concentration	1 mg/mL
Storage Conditions	SIRT1 antibody can be stored at 4°C for three months and -20°C, stable for up to one year. As with all antibodies care should be taken to avoid repeated freeze thaw cycles. Antibodies should not be exposed to prolonged high temperatures.



SIRT1 Antibody 1

Western blot analysis of SIRT1 in mouse liver tissue lysate with SIRT1 antibody at 1 µg/mL.



SIRT1 Antibody 2

Immunofluorescence of SIRT1 in rat lung tissue with SIRT1 antibody at 20 µg/mL.

Disclaimer

Disclaimer	Optimal dilutions/concentrations should be determined by the end user. The information provided is a guideline for product use. This product is for research use only.
------------	--

For research use only. For additional information, visit ProSci's [Terms and Conditions Page](#).