

RBBP8 Antibody

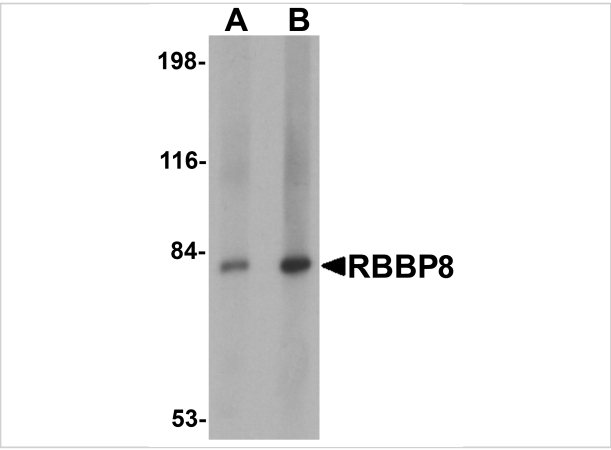
CATALOG NUMBER: 5761

Specifications

Host Species	Rabbit
Species Reactivity	Human, Mouse, Rat
Immunogen	RBBP8 antibody was raised against a 14 amino acid synthetic peptide near the center of human RBBP8. The immunogen is located within amino acids 430 - 480 of RBBP8.
Conjugate	Unconjugated
Tested Applications	ELISA, IF, IHC-P, WB
User Note	Optimal dilutions for each application to be determined by the researcher.

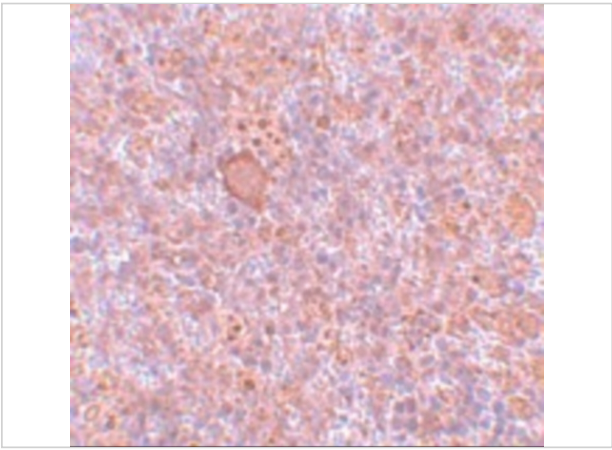
Properties

Purification	RBBP8 Antibody is affinity chromatography purified via peptide column.
Clonality	Polyclonal
Isotype	IgG
Physical State	Liquid
Buffer	RBBP8 Antibody is supplied in PBS containing 0.02% sodium azide.
Concentration	1 mg/mL
Storage Conditions	RBBP8 antibody can be stored at 4°C for three months and -20°C, stable for up to one year. As with all antibodies care should be taken to avoid repeated freeze thaw cycles. Antibodies should not be exposed to prolonged high temperatures.



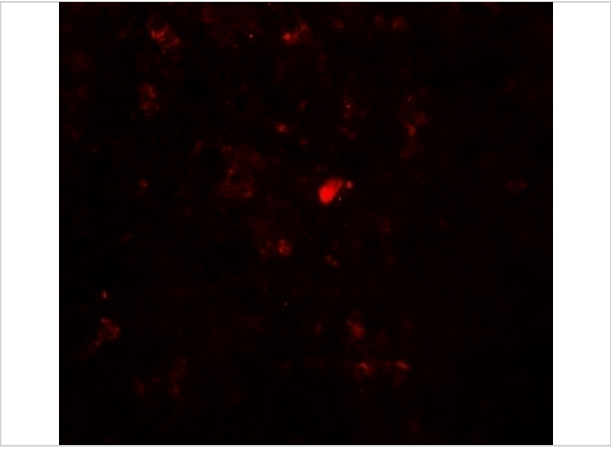
RBBP8 Antibody 1

Western blot analysis of RBBP8 in mouse spleen tissue lysate with RBBP8 antibody at (A) 1 and (B) 2 $\mu\text{g/mL}$.



RBBP8 Antibody 2

Immunohistochemistry of RBBP8 in rat spleen tissue with RBBP8 antibody at 5 $\mu\text{g/mL}$.



RBBP8 Antibody 3

Immunofluorescence of RBBP8 in rat spleen tissue with RBBP8 antibody at 20 $\mu\text{g/mL}$.

Disclaimer

Disclaimer	Optimal dilutions/concentrations should be determined by the end user. The information provided is a guideline for product use. This product is for research use only.
-------------------	--

For research use only. For additional information, visit ProSci's [Terms and Conditions Page](#).