

SAE2 Antibody

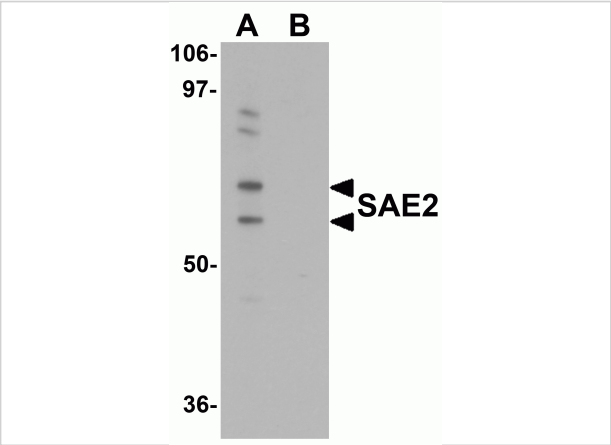
CATALOG NUMBER: 5751

Specifications

Host Species	Rabbit
Species Reactivity	Human
Homology	Predicted species reactivity based on immunogen sequence: Mouse: (94%)
Immunogen	SAE2 antibody was raised against an 18 amino acid synthetic peptide near the carboxy terminus of human SAE2. The immunogen is located within amino acids 550 - 600 of SAE2.
Conjugate	Unconjugated
Tested Applications	ELISA, ICC, IF, WB
User Note	Optimal dilutions for each application to be determined by the researcher.

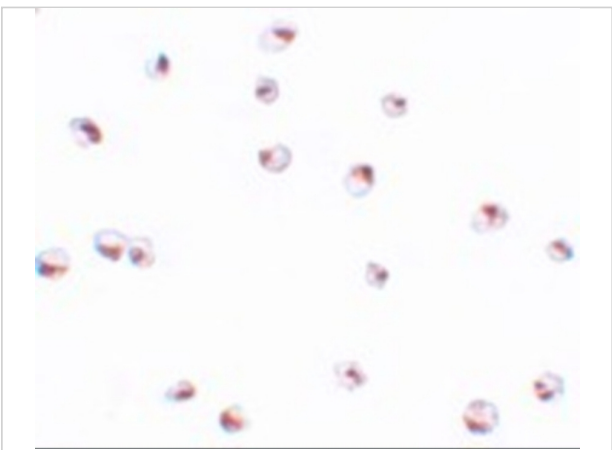
Properties

Purification	SAE2 Antibody is affinity chromatography purified via peptide column.
Clonality	Polyclonal
Isotype	IgG
Physical State	Liquid
Buffer	SAE2 Antibody is supplied in PBS containing 0.02% sodium azide.
Concentration	1 mg/mL
Storage Conditions	SAE2 antibody can be stored at 4°C for three months and -20°C, stable for up to one year. As with all antibodies care should be taken to avoid repeated freeze thaw cycles. Antibodies should not be exposed to prolonged high temperatures.



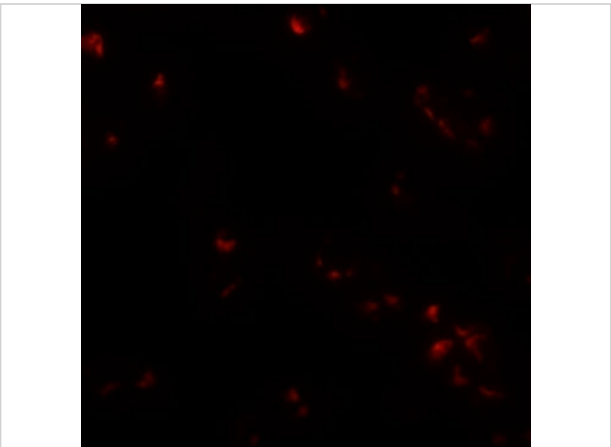
SAE2 Antibody 1

Western blot analysis of SAE2 in 293 cell lysate with SAE2 antibody at 0.25 µg/mL in (A) the absence and (B) the presence of blocking peptide.



SAE2 Antibody 2

Immunocytochemistry of SAE2 in 293 cells with SAE2 antibody at 4 µg/mL.



SAE2 Antibody 3

Immunofluorescence of SAE2 in 293 cells with SAE2 antibody at 20 µg/mL.

Disclaimer

Disclaimer	Optimal dilutions/concentrations should be determined by the end user. The information provided is a guideline for product use. This product is for research use only.
------------	------------------------------------------------------------------------------------------------------------------------------------------------------------------------

For research use only. For additional information, visit ProSci's [Terms and Conditions Page](#).