

## PIAS2 Antibody

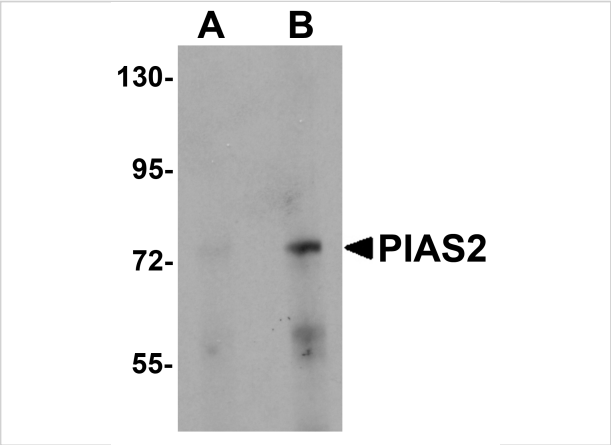
CATALOG NUMBER: 5743

### Specifications

|                     |  |
|---------------------|--|
| Host Species        | Rabbit   |
| Species Reactivity  | Human, Mouse, Rat  |
| Immunogen           | PIAS2 antibody was raised against a 18 amino acid synthetic peptide near the amino terminus of human PIAS2.<br>The immunogen is located within amino acids 110 - 160 of PIAS2. |
| Conjugate           | Unconjugated   |
| Tested Applications | ELISA, IF, IHC-P, WB   |
| User Note           | Optimal dilutions for each application to be determined by the researcher.   |

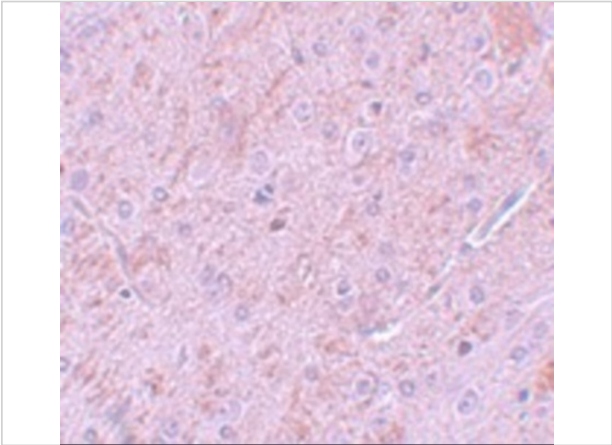
### Properties

|                    |   |
|--------------------|---|
| Purification       | PIAS2 Antibody is affinity chromatography purified via peptide column.  |
| Clonality          | Polyclonal  |
| Isotype            | IgG   |
| Physical State     | Liquid  |
| Buffer             | PIAS2 Antibody is supplied in PBS containing 0.02% sodium azide.  |
| Concentration      | 1 mg/mL   |
| Storage Conditions | PIAS2 antibody can be stored at 4°C for three months and -20°C, stable for up to one year.<br>As with all antibodies care should be taken to avoid repeated freeze thaw cycles.<br>Antibodies should not be exposed to prolonged high temperatures. |



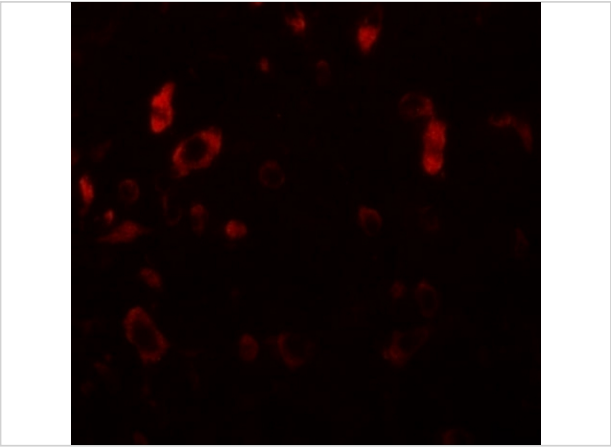
PIAS2 Antibody 1

Western blot analysis of PIAS2 in rat brain tissue lysate with PIAS2 antibody at (A) 1 and (B) 2 µg/mL.



PIAS2 Antibody 2

Immunohistochemistry of PIAS2 in rat brain tissue with PIAS2 antibody at 5 µg/mL.



PIAS2 Antibody 3

Immunofluorescence of PIAS2 in rat brain tissue with PIAS2 antibody at 20 µg/mL.

Disclaimer

|            |  |
|------------|--|
| Disclaimer | Optimal dilutions/concentrations should be determined by the end user. The information provided is a guideline for product use. This product is for research use only. |
|------------|--|

For research use only. For additional information, visit ProSci's [Terms and Conditions Page](#).