

APC11 Antibody

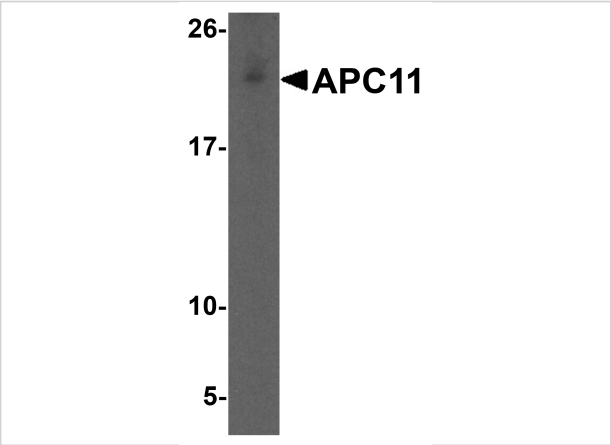
CATALOG NUMBER: 5737

Specifications

Host Species	Rabbit
Species Reactivity	Human, Mouse, Rat
Homology	Predicted species reactivity based on immunogen sequence: Bovine: (100%)
Immunogen	APC11 antibody was raised against an 18 amino acid synthetic peptide near the center of human APC11. The immunogen is located within amino acids 70 - 120 of APC11.
Conjugate	Unconjugated
Tested Applications	ELISA, IF, WB
User Note	Optimal dilutions for each application to be determined by the researcher.
Predicted Molecular Weight	Predicted: 22 kDa Observed: 22 kDa

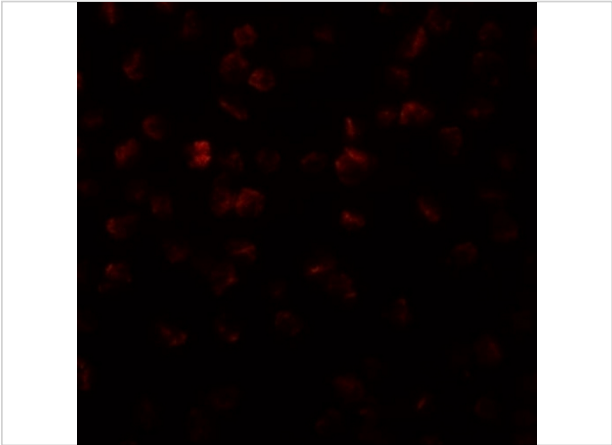
Properties

Purification	APC11 Antibody is affinity chromatography purified via peptide column.
Clonality	Polyclonal
Isotype	IgG
Physical State	Liquid
Buffer	APC11 Antibody is supplied in PBS containing 0.02% sodium azide.
Concentration	1 mg/mL
Storage Conditions	APC11 antibody can be stored at 4°C for three months and -20°C, stable for up to one year. As with all antibodies care should be taken to avoid repeated freeze thaw cycles. Antibodies should not be exposed to prolonged high temperatures.



APC11 Antibody 1

Western blot analysis of APC11 in HeLa cell lysate with APC11 antibody at 1 µg/mL.



APC11 Antibody 2

Immunofluorescence of APC11 in 3T3 cells with APC11 antibody at 20 µg/mL.

Disclaimer

Disclaimer	Optimal dilutions/concentrations should be determined by the end user. The information provided is a guideline for product use. This product is for research use only.
------------	--

For research use only. For additional information, visit ProSci's [Terms and Conditions Page](#).