

FAM82A1 Antibody

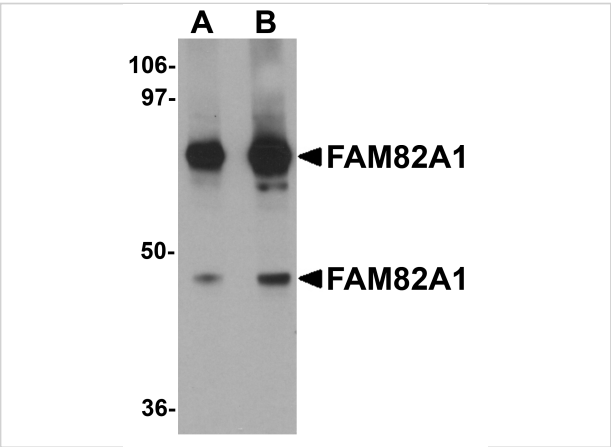
CATALOG NUMBER: 5697

Specifications

Host Species	Chicken
Species Reactivity	Human, Mouse, Rat
Homology	Predicted species reactivity based on immunogen sequence: Bovine: (94%)
Immunogen	FAM82A1 antibody was raised against a 16 amino acid synthetic peptide near the amino terminus of human FAM82A1. The immunogen is located within amino acids 140 - 190 of FAM82A1.
Conjugate	Unconjugated
Tested Applications	ELISA, ICC, IF, WB
User Note	Optimal dilutions for each application to be determined by the researcher.

Properties

Purification	FAM82A1 Antibody is affinity chromatography purified via peptide column.
Clonality	Polyclonal
Isotype	IgY
Physical State	Liquid
Buffer	FAM82A1 Antibody is supplied in PBS containing 0.02% sodium azide.
Concentration	1 mg/mL
Storage Conditions	FAM82A1 antibody can be stored at 4°C for three months and -20°C, stable for up to one year. As with all antibodies care should be taken to avoid repeated freeze thaw cycles. Antibodies should not be exposed to prolonged high temperatures.



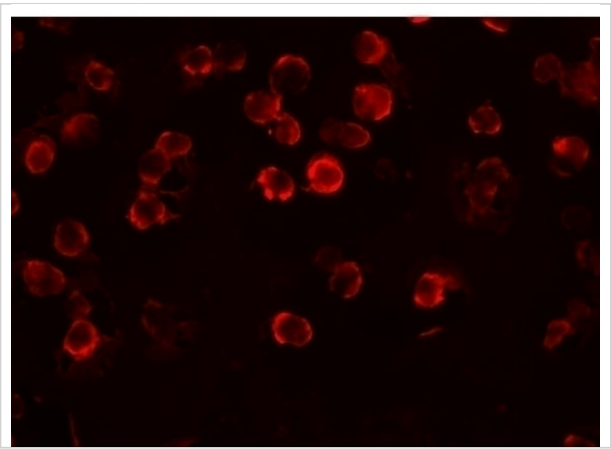
FAM82A1 Antibody 1

Western blot analysis of FAM82A1 in K562 cell lysate with FAM82A1 antibody at (A) 1 and (B) 2 $\mu\text{g/mL}$.



FAM82A1 Antibody 2

Immunocytochemistry of FAM82A1 in Jurkat cells with ENC-2 antibody at 5 $\mu\text{g/mL}$.



FAM82A1 Antibody 3

Immunofluorescence of FAM82A1 in K562 cells with FAM82A1 antibody at 20 $\mu\text{g/mL}$.

Disclaimer

Disclaimer	Optimal dilutions/concentrations should be determined by the end user. The information provided is a guideline for product use. This product is for research use only.
------------	------------------------------------------------------------------------------------------------------------------------------------------------------------------------

For research use only. For additional information, visit ProSci's [Terms and Conditions Page](#).