

ZC3H12C Antibody

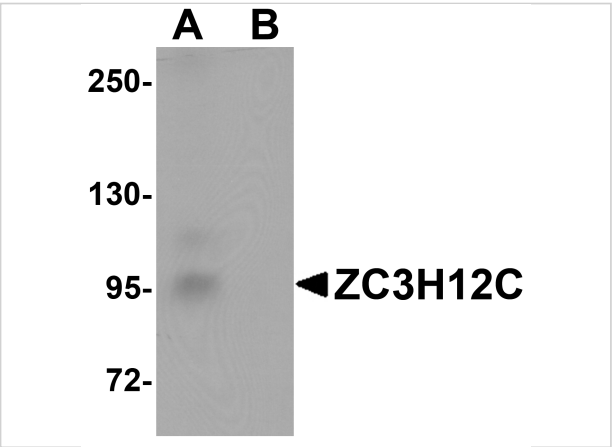
CATALOG NUMBER: 5677

Specifications

Host Species	Rabbit
Species Reactivity	Human, Mouse, Rat
Immunogen	ZC3H12C antibody was raised against a 17 amino acid synthetic peptide near the amino terminus of human ZC3H12C. The immunogen is located within the first 50 amino acids of ZC3H12C.
Conjugate	Unconjugated
Tested Applications	ELISA, IF, IHC-P, WB
User Note	Optimal dilutions for each application to be determined by the researcher.

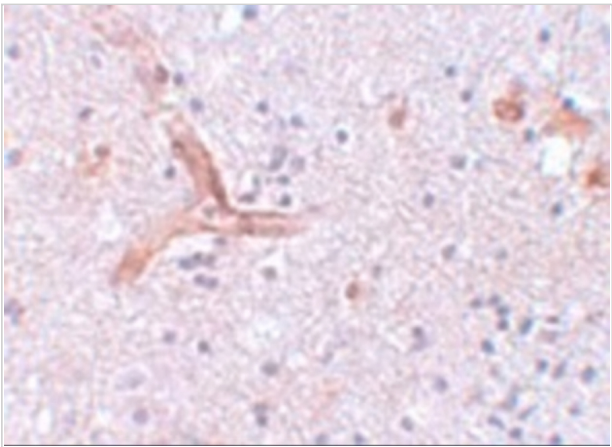
Properties

Purification	ZC3H12C Antibody is affinity chromatography purified via peptide column.
Clonality	Polyclonal
Isotype	IgG
Physical State	Liquid
Buffer	ZC3H12C Antibody is supplied in PBS containing 0.02% sodium azide.
Concentration	1 mg/mL
Storage Conditions	ZC3H12C antibody can be stored at 4°C for three months and -20°C, stable for up to one year. As with all antibodies care should be taken to avoid repeated freeze thaw cycles. Antibodies should not be exposed to prolonged high temperatures.



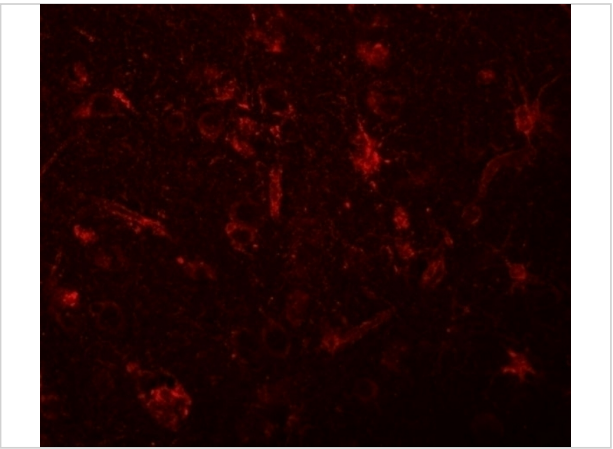
ZC3H12C Antibody 1

Western blot analysis of ZC3H12C in rat brain tissue lysate with ZC3H12C antibody at 1 µg/mL in (A) the absence and (B) the presence of blocking peptide.



ZC3H12C Antibody 2

Immunohistochemistry of ZC3H12C in human brain tissue with ZC3H12C antibody at 5 µg/mL.



ZC3H12C Antibody 3

Immunofluorescence of ZC3H12C in human brain tissue with ZC3H12C antibody at 20 µg/mL.

Disclaimer

Disclaimer	Optimal dilutions/concentrations should be determined by the end user. The information provided is a guideline for product use. This product is for research use only.
-------------------	--

For research use only. For additional information, visit ProSci's [Terms and Conditions Page](#).