

RANBP10 Antibody

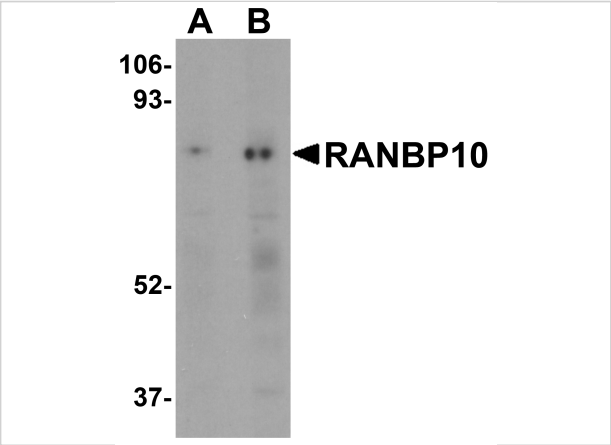
CATALOG NUMBER: 5665

Specifications

Host Species	Rabbit
Species Reactivity	Human
Homology	Predicted species reactivity based on immunogen sequence: Bovine: (93%), Mouse: (87%)
Immunogen	RANBP10 antibody was raised against a 15 amino acid synthetic peptide near the center of human RANBP10. The immunogen is located within amino acids 380 - 430 of RANBP10.
Conjugate	Unconjugated
Tested Applications	ELISA, IF, IHC-P, WB
User Note	Optimal dilutions for each application to be determined by the researcher.

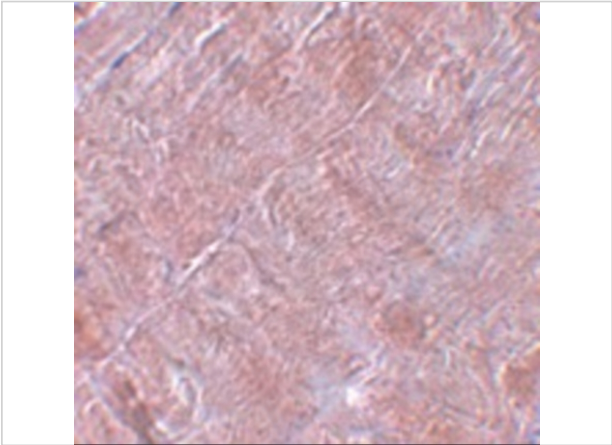
Properties

Purification	RANBP10 Antibody is affinity chromatography purified via peptide column.
Clonality	Polyclonal
Isotype	IgG
Physical State	Liquid
Buffer	RANBP10 Antibody is supplied in PBS containing 0.02% sodium azide.
Concentration	1 mg/mL
Storage Conditions	RANBP10 antibody can be stored at 4°C for three months and -20°C, stable for up to one year. As with all antibodies care should be taken to avoid repeated freeze thaw cycles. Antibodies should not be exposed to prolonged high temperatures.



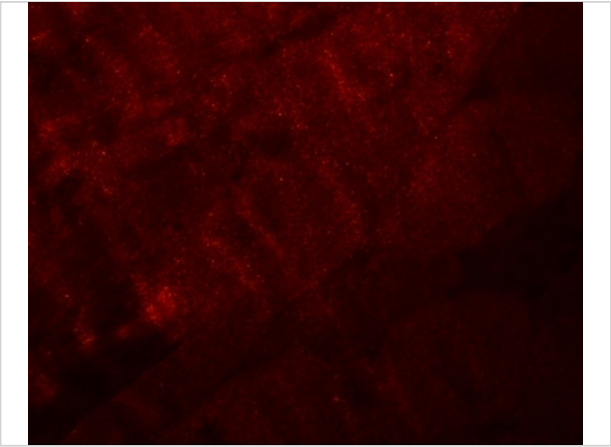
RANBP10 Antibody 1

Western blot analysis of RANBP10 in human skeletal muscle tissue lysate with RANBP10 antibody at (A) 1 and (B) 2 µg/mL.



RANBP10 Antibody 2

Immunohistochemistry of RANBP10 in human skeletal muscle tissue with RANBP10 antibody at 5 µg/mL.



RANBP10 Antibody 3

Immunofluorescence of RANBP10 in mouse skeletal muscle tissue with RANBP10 antibody at 20 µg/mL.

Disclaimer

Disclaimer	Optimal dilutions/concentrations should be determined by the end user. The information provided is a guideline for product use. This product is for research use only.
------------	--

For research use only. For additional information, visit ProSci's [Terms and Conditions Page](#).