

EFHD1 Antibody

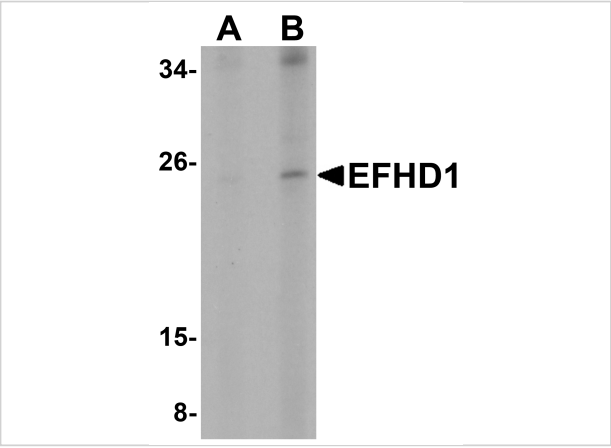
CATALOG NUMBER: 5655

Specifications

Host Species	Rabbit
Species Reactivity	Human, Mouse, Rat
Immunogen	EFHD1 antibody was raised against a 14 amino acid synthetic peptide near the amino terminus of human EFHD1. The immunogen is located within the first 50 amino acids of EFHD1.
Conjugate	Unconjugated
Tested Applications	ELISA, IF, WB
User Note	Optimal dilutions for each application to be determined by the researcher.

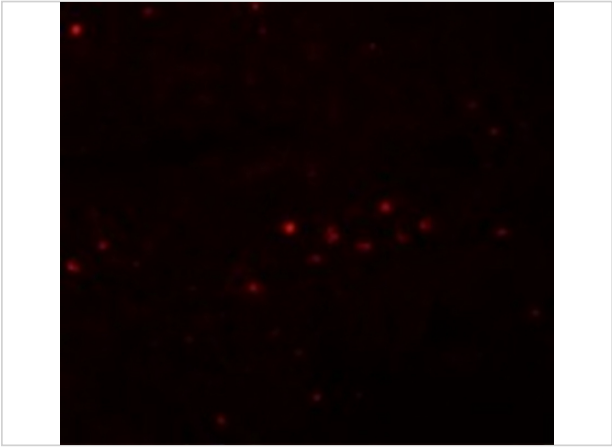
Properties

Purification	EFHD1 Antibody is affinity chromatography purified via peptide column.
Clonality	Polyclonal
Isotype	IgG
Physical State	Liquid
Buffer	EFHD1 Antibody is supplied in PBS containing 0.02% sodium azide.
Concentration	1 mg/mL
Storage Conditions	EFHD1 antibody can be stored at 4°C for three months and -20°C, stable for up to one year. As with all antibodies care should be taken to avoid repeated freeze thaw cycles. Antibodies should not be exposed to prolonged high temperatures.



EFHD1 Antibody 1

Western blot analysis of EFHD1 in human spleen tissue lysate with EFHD1 antibody at (A) 2 and (B) 4 µg/mL.



EFHD1 Antibody 2

Immunofluorescence of EFHD1 in rat spleen tissue with EFHD1 antibody at 5 µg/mL.

Disclaimer

Disclaimer	Optimal dilutions/concentrations should be determined by the end user. The information provided is a guideline for product use. This product is for research use only.
------------	--

For research use only. For additional information, visit ProSci's [Terms and Conditions Page](#).