

MYBPC2 Antibody

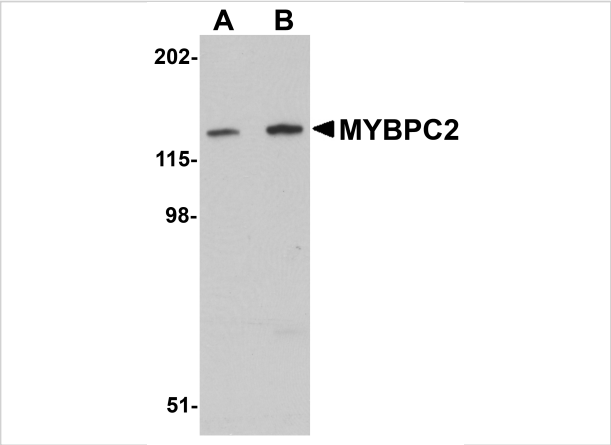
CATALOG NUMBER: 5651

Specifications

Host Species	Rabbit
Species Reactivity	Human, Mouse
Homology	Predicted species reactivity based on immunogen sequence: Chicken: (91%)
Immunogen	MYBPC2 antibody was raised against a 15 amino acid synthetic peptide near the carboxy terminus of human MYBPC2. The immunogen is located within amino acids 1070 - 1120 of MYBPC2.
Conjugate	Unconjugated
Tested Applications	ELISA, IHC-P, WB
User Note	Optimal dilutions for each application to be determined by the researcher.

Properties

Purification	MYBPC2 Antibody is affinity chromatography purified via peptide column.
Clonality	Polyclonal
Isotype	IgG
Physical State	Liquid
Buffer	MYBPC2 Antibody is supplied in PBS containing 0.02% sodium azide.
Concentration	1 mg/mL
Storage Conditions	MYBPC2 antibody can be stored at 4°C for three months and -20°C, stable for up to one year. As with all antibodies care should be taken to avoid repeated freeze thaw cycles. Antibodies should not be exposed to prolonged high temperatures.



MYBPC2 Antibody 1

Western blot analysis of MYBPC2 in mouse skeletal muscle tissue lysate with MYBPC2 antibody at (A) 1 and (B) 2 $\mu\text{g/mL}$.



MYBPC2 Antibody 2

Immunohistochemistry of MYBPC2 in mouse skeletal muscle tissue with MYBPC2 antibody at 5 $\mu\text{g/mL}$.

Disclaimer

Disclaimer	Optimal dilutions/concentrations should be determined by the end user. The information provided is a guideline for product use. This product is for research use only.
-------------------	--

For research use only. For additional information, visit ProSci's [Terms and Conditions Page](#).