

## MYBPC1 Antibody

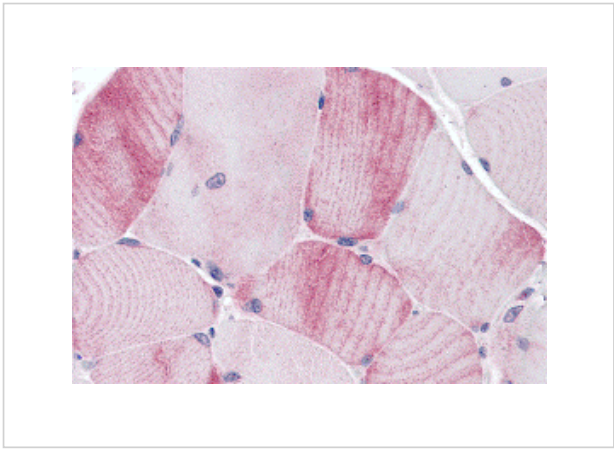
CATALOG NUMBER: 5649

### Specifications

Host Species	Rabbit
Species Reactivity	Human
Immunogen	MYBPC1 antibody was raised against a 12 amino acid synthetic peptide near the carboxy terminus of human MYBPC1. The immunogen is located within the last 50 amino acids of MYBPC1.
Conjugate	Unconjugated
Tested Applications	ELISA, IHC-P
User Note	Optimal dilutions for each application to be determined by the researcher.

### Properties

Purification	MYBPC1 Antibody is affinity chromatography purified via peptide column.
Clonality	Polyclonal
Isotype	IgG
Physical State	Liquid
Buffer	MYBPC1 Antibody is supplied in PBS containing 0.02% sodium azide.
Concentration	1 mg/mL
Storage Conditions	MYBPC1 antibody can be stored at 4°C for three months and -20°C, stable for up to one year. As with all antibodies care should be taken to avoid repeated freeze thaw cycles. Antibodies should not be exposed to prolonged high temperatures.



## MYBPC1 Antibody 1

Immunohistochemistry of MYBPC1 in human skeletal muscle tissue with MYBPC1 antibody at 5 µg/mL.

## Disclaimer

Disclaimer	Optimal dilutions/concentrations should be determined by the end user. The information provided is a guideline for product use. This product is for research use only.
------------	------------------------------------------------------------------------------------------------------------------------------------------------------------------------

For research use only. For additional information, visit ProSci's [Terms and Conditions Page](#).