



ProSci Incorporated
12170 Flint Place
Poway, CA 92064, USA
prosci-inc.com

P: +1 (888) 513-9525
Local: +1 (858) 513-2638
Fax: +1 (858) 513-2692

customercare@prosci-inc.com
techsupport@prosci-inc.com

MINA Antibody

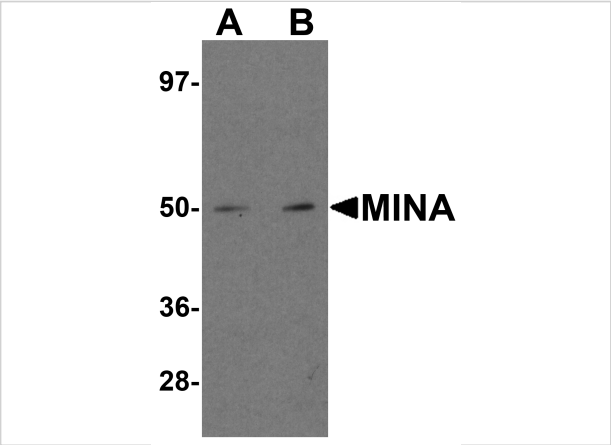
CATALOG NUMBER: 5617

Specifications

Host Species	Rabbit
Species Reactivity	Human, Mouse
Homology	Predicted species reactivity based on immunogen sequence: Bovine: (80%), Rat: (80%)
Immunogen	MINA antibody was raised against a 15 amino acid synthetic peptide near the amino terminus of human MINA. The immunogen is located within amino acids 380 - 430 of MINA.
Conjugate	Unconjugated
Tested Applications	ELISA, IF, IHC-P, WB
User Note	Optimal dilutions for each application to be determined by the researcher.

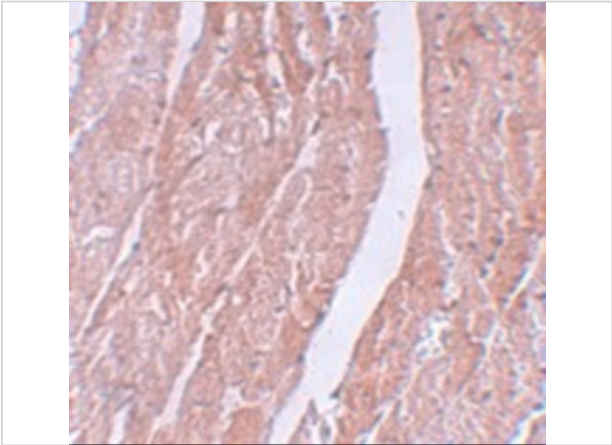
Properties

Purification	MINA Antibody is affinity chromatography purified via peptide column.
Clonality	Polyclonal
Isotype	IgG
Physical State	Liquid
Buffer	MINA Antibody is supplied in PBS containing 0.02% sodium azide.
Concentration	1 mg/mL
Storage Conditions	MINA antibody can be stored at 4°C for three months and -20°C, stable for up to one year. As with all antibodies care should be taken to avoid repeated freeze thaw cycles. Antibodies should not be exposed to prolonged high temperatures.



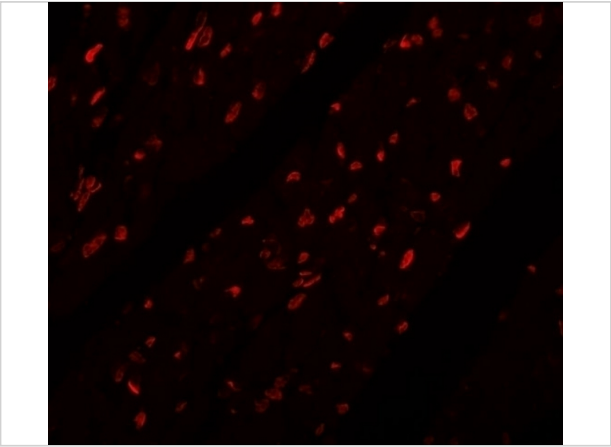
MINA Antibody 1

Western blot analysis of MINA in human heart tissue lysate with MINA antibody at (A) 1 and (B) 2 $\mu\text{g/mL}$.



MINA Antibody 2

Immunohistochemistry of MINA in mouse heart tissue with MINA antibody at 5 $\mu\text{g/mL}$.



MINA Antibody 3

Immunofluorescence of MINA in mouse heart tissue with MINA antibody at 20 $\mu\text{g/mL}$.

Disclaimer

Disclaimer	Optimal dilutions/concentrations should be determined by the end user. The information provided is a guideline for product use. This product is for research use only.
-------------------	--

For research use only. For additional information, visit ProSci's [Terms and Conditions Page](#).