

GATA3 Antibody

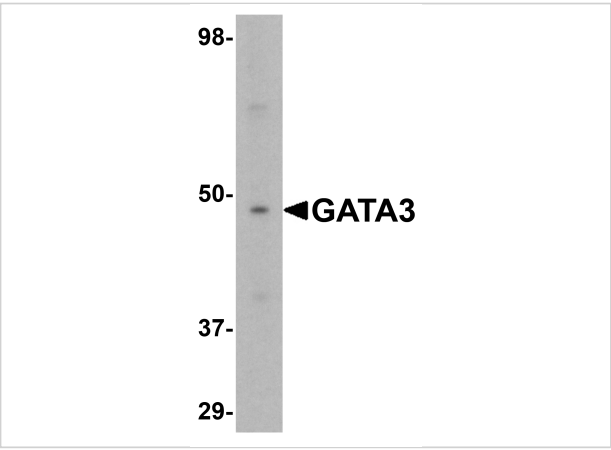
CATALOG NUMBER: 5599

Specifications

Host Species	Rabbit
Species Reactivity	Human, Mouse, Rat
Homology	Predicted species reactivity based on immunogen sequence: Bovine: (100%), Chicken: (100%), Pig: (72%)
Immunogen	GATA3 antibody was raised against a 17 amino acid synthetic peptide near the carboxy terminus of human GATA3. The immunogen is located within amino acids 340 - 390 of GATA3.
Conjugate	Unconjugated
Tested Applications	ELISA, IF, IHC-P, WB
User Note	Optimal dilutions for each application to be determined by the researcher.
Predicted Molecular Weight	Predicted: 49 kDa Observed: 49 kDa

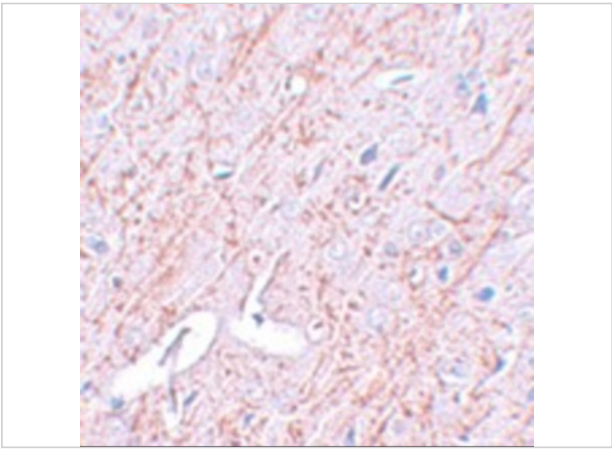
Properties

Purification	GATA3 Antibody is affinity chromatography purified via peptide column.
Clonality	Polyclonal
Isotype	IgG
Physical State	Liquid
Buffer	GATA3 Antibody is supplied in PBS containing 0.02% sodium azide.
Concentration	1 mg/mL
Storage Conditions	GATA3 antibody can be stored at 4°C for three months and -20°C, stable for up to one year. As with all antibodies care should be taken to avoid repeated freeze thaw cycles. Antibodies should not be exposed to prolonged high temperatures.



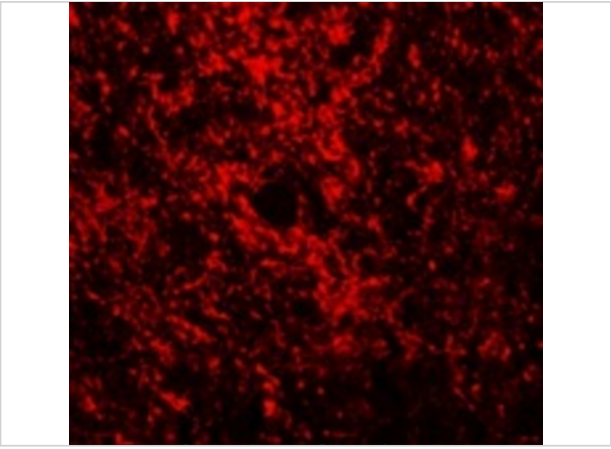
GATA3 Antibody 1

Western blot analysis of GATA3 in K562 cell lysate with GATA3 antibody at 1 µg/mL.



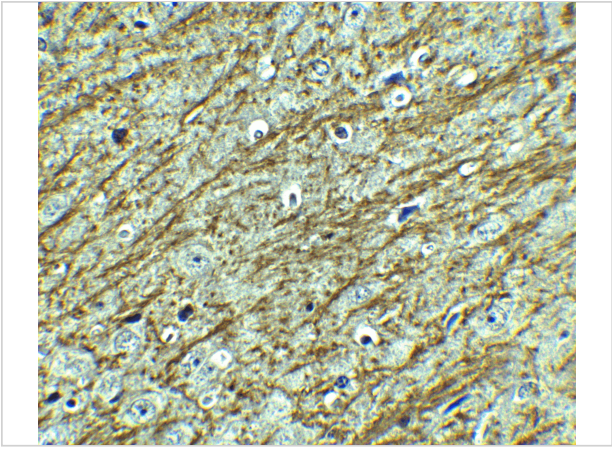
GATA3 Antibody 2

Immunohistochemistry of GATA3 in rat brain tissue with GATA3 antibody at 2.5 µg/mL.



GATA3 Antibody 3

Immunofluorescence of GATA3 in Rat Brain tissue with GATA3 antibody at 20 µg/mL.



GATA3 Antibody 4

Immunohistochemistry of GATA3 in mouse brain tissue with GATA3 antibody at 2.5 µg/mL.

Disclaimer

Disclaimer	Optimal dilutions/concentrations should be determined by the end user. The information provided is a guideline for product use. This product is for research use only.
------------	--

For research use only. For additional information, visit ProSci's [Terms and Conditions Page](#).