

## LXR-B Antibody

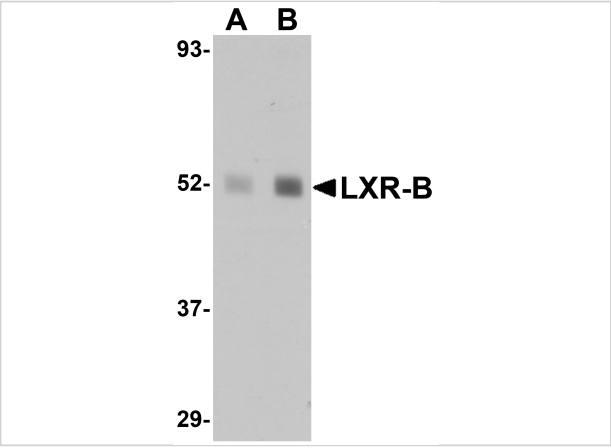
CATALOG NUMBER: 5579

### Specifications

Host Species	Rabbit
Species Reactivity	Human, Mouse, Rat
Immunogen	LXR-B antibody was raised against a 14 amino acid synthetic peptide from near the amino terminus human LXR-B. The immunogen is located within the first 50 amino acids of LXR-B.
Conjugate	Unconjugated
Tested Applications	ELISA, WB
User Note	Optimal dilutions for each application to be determined by the researcher.

### Properties

Purification	LXR-B Antibody is affinity chromatography purified via peptide column.
Clonality	Polyclonal
Isotype	IgG
Physical State	Liquid
Buffer	LXR-B Antibody is supplied in PBS containing 0.02% sodium azide.
Concentration	1 mg/mL
Storage Conditions	LXR-B antibody can be stored at 4°C for three months and -20°C, stable for up to one year. As with all antibodies care should be taken to avoid repeated freeze thaw cycles. Antibodies should not be exposed to prolonged high temperatures.



LXR-B Antibody 1

Western blot analysis of LXR-B in human lung tissue lysate with LXR-B antibody at (A) 1 and (B) 2 µg/mL.

Disclaimer

Disclaimer	Optimal dilutions/concentrations should be determined by the end user. The information provided is a guideline for product use. This product is for research use only.
------------	--

For research use only. For additional information, visit ProSci's [Terms and Conditions Page](#).