

REEP3 Antibody

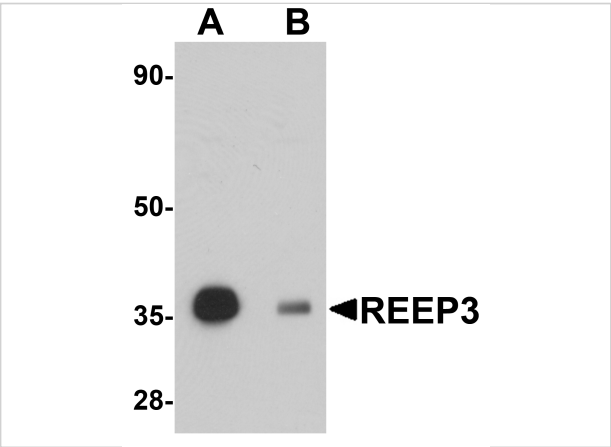
CATALOG NUMBER: 5573

Specifications

Host Species	Rabbit
Species Reactivity	Human, Mouse, Rat
Immunogen	REEP3 antibody was raised against a 17 amino acid synthetic peptide near the carboxy terminus of human REEP3. The immunogen is located within the last 50 amino acids of REEP3.
Conjugate	Unconjugated
Tested Applications	ELISA, ICC, IF, IHC-P, WB
User Note	Optimal dilutions for each application to be determined by the researcher.

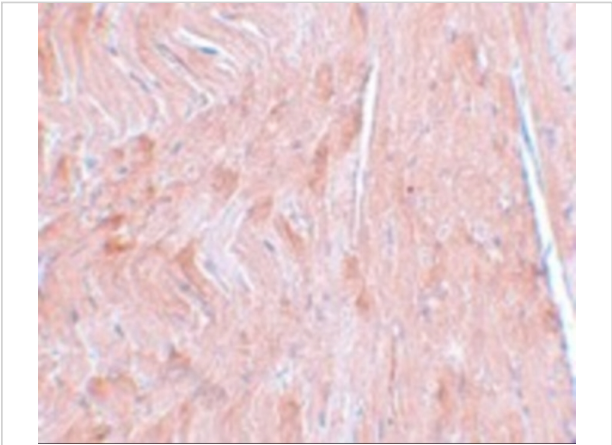
Properties

Purification	REEP3 Antibody is affinity chromatography purified via peptide column.
Clonality	Polyclonal
Isotype	IgG
Physical State	Liquid
Buffer	REEP3 Antibody is supplied in PBS containing 0.02% sodium azide.
Concentration	1 mg/mL
Storage Conditions	REEP3 antibody can be stored at 4°C for three months and -20°C, stable for up to one year. As with all antibodies care should be taken to avoid repeated freeze thaw cycles. Antibodies should not be exposed to prolonged high temperatures.



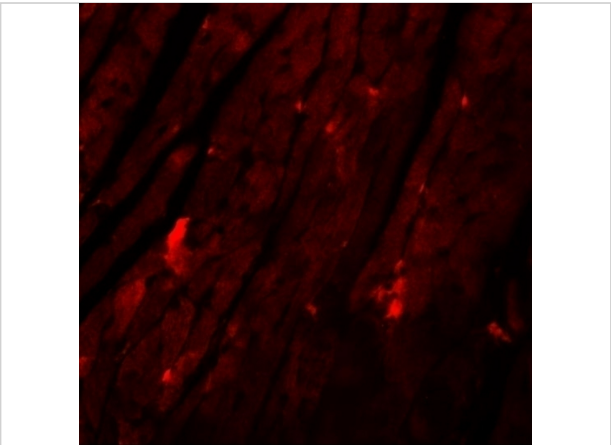
REEP3 Antibody 1

Western blot analysis of REEP3 in rat heart tissue lysate with REEP3 antibody at 1 µg/mL in (A) the absence and (B) the presence of blocking peptide.



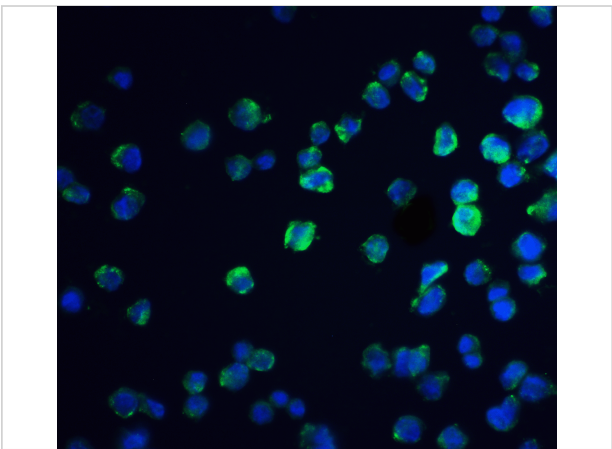
REEP3 Antibody 2

Immunohistochemistry of REEP3 in mouse heart tissue with REEP3 antibody at 5 µg/mL.



REEP3 Antibody 3

Immunofluorescence of REEP3 in mouse heart tissue with REEP3 antibody at 20 µg/mL.



REEP3 Antibody 4

Immunofluorescence of REEP3 in A431 cells with REEP3 antibody at 20 µg/mL.

Green: REEP3 Antibody (5573)
Blue: DAPI staining

Disclaimer

Disclaimer	Optimal dilutions/concentrations should be determined by the end user. The information provided is a guideline for product use. This product is for research use only.
------------	--

For research use only. For additional information, visit ProSci's [Terms and Conditions Page](#).