

REEP2 Antibody

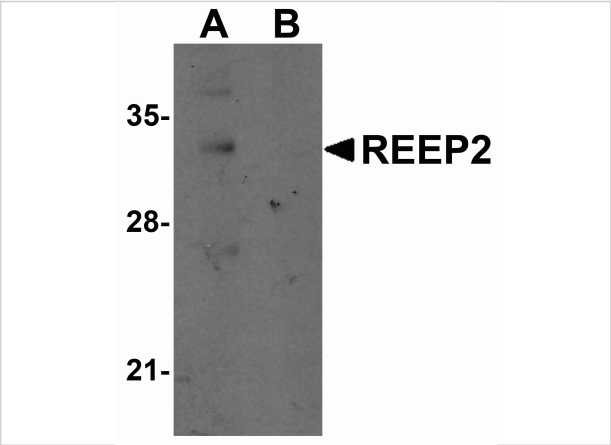
CATALOG NUMBER: 5571

Specifications

Host Species	Rabbit
Species Reactivity	Human, Mouse, Rat
Homology	Predicted species reactivity based on immunogen sequence: Bovine: (87%)
Immunogen	REEP2 antibody was raised against a 15 amino acid synthetic peptide near the center of human REEP2. The immunogen is located within amino acids 150 - 200 of REEP2.
Conjugate	Unconjugated
Tested Applications	ELISA, IF, IHC-P, WB
User Note	Optimal dilutions for each application to be determined by the researcher.

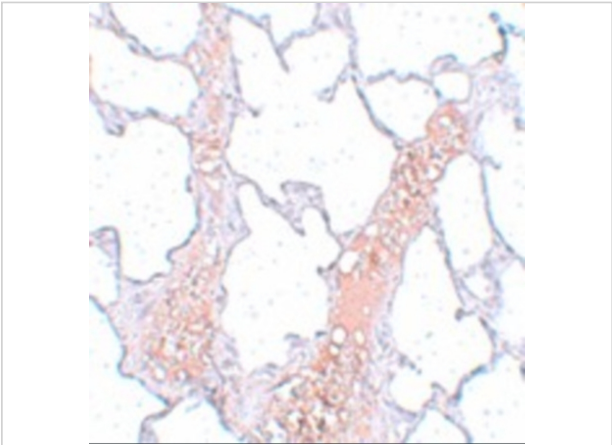
Properties

Purification	REEP2 Antibody is affinity chromatography purified via peptide column.
Clonality	Polyclonal
Isotype	IgG
Physical State	Liquid
Buffer	REEP2 Antibody is supplied in PBS containing 0.02% sodium azide.
Concentration	1 mg/mL
Storage Conditions	REEP2 antibody can be stored at 4°C for three months and -20°C, stable for up to one year. As with all antibodies care should be taken to avoid repeated freeze thaw cycles. Antibodies should not be exposed to prolonged high temperatures.



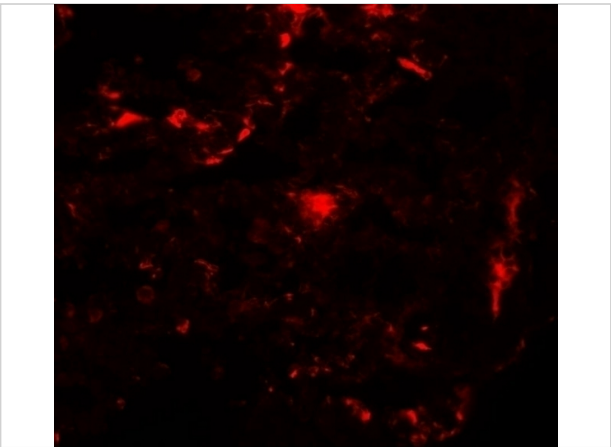
REEP2 Antibody 1

Western blot analysis of REEP2 in mouse lung tissue lysate with REEP2 antibody at 1 µg/mL in (A) the absence and (B) the presence of blocking peptide.



REEP2 Antibody 2

Immunohistochemistry of REEP2 in rat lung tissue with REEP2 antibody at 5 µg/mL.



REEP2 Antibody 3

Immunofluorescence of REEP2 in rat lung tissue with REEP2 antibody at 20 µg/mL.

Disclaimer

Disclaimer	Optimal dilutions/concentrations should be determined by the end user. The information provided is a guideline for product use. This product is for research use only.
------------	--

For research use only. For additional information, visit ProSci's [Terms and Conditions Page](#).