

## SYNGR2 Antibody

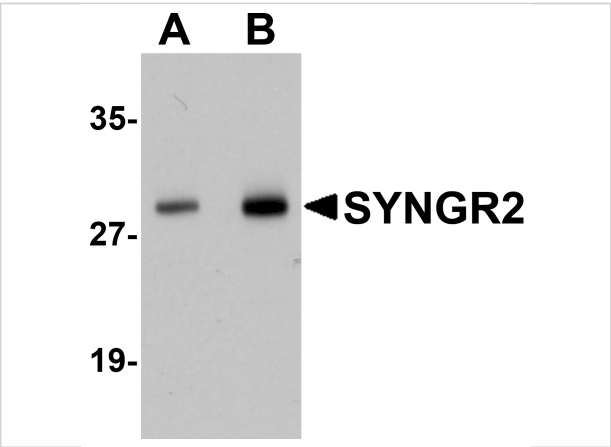
CATALOG NUMBER: 5565

### Specifications

Host Species	Rabbit
Species Reactivity	Human, Rat
Immunogen	SYNGR2 antibody was raised against a 17 amino acid synthetic peptide from near the amino terminus of human SYNGR2. The immunogen is located within amino acids 30 - 80 of SYNGR2.
Conjugate	Unconjugated
Tested Applications	ELISA, IF, IHC-P, WB
User Note	Optimal dilutions for each application to be determined by the researcher.

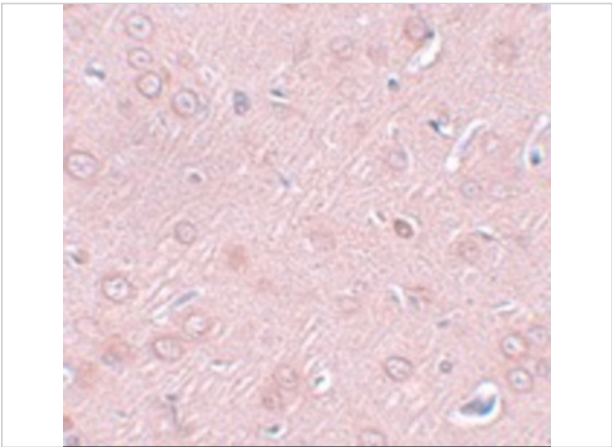
### Properties

Purification	SYNGR2 Antibody is affinity chromatography purified via peptide column.
Clonality	Polyclonal
Isotype	IgG
Physical State	Liquid
Buffer	SYNGR2 Antibody is supplied in PBS containing 0.02% sodium azide.
Concentration	1 mg/mL
Storage Conditions	SYNGR2 antibody can be stored at 4°C for three months and -20°C, stable for up to one year. As with all antibodies care should be taken to avoid repeated freeze thaw cycles. Antibodies should not be exposed to prolonged high temperatures.



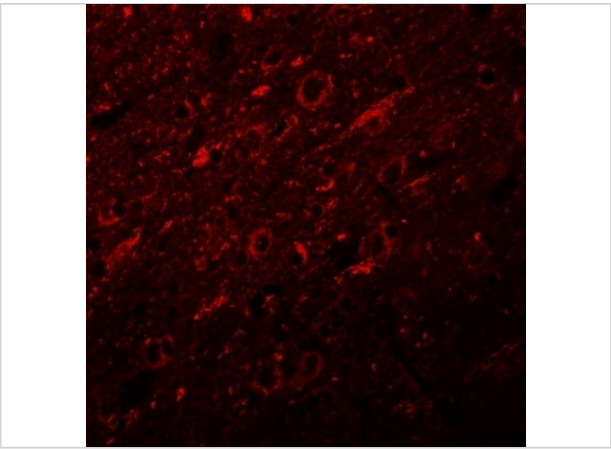
### SYNGR2 Antibody 1

Western blot analysis of SYNGR2 in human lung tissue lysate with SYNGR2 antibody at (A) 1 and (B) 2  $\mu\text{g/mL}$ .



### SYNGR2 Antibody 2

Immunohistochemistry of SYNGR2 in rat brain tissue with SYNGR2 antibody at 2.5  $\mu\text{g/mL}$ .



### SYNGR2 Antibody 3

Immunofluorescence of SYNGR2 in rat brain tissue with SYNGR2 antibody at 20  $\mu\text{g/mL}$ .

## Disclaimer

Disclaimer	Optimal dilutions/concentrations should be determined by the end user. The information provided is a guideline for product use. This product is for research use only.
------------	--

For research use only. For additional information, visit ProSci's [Terms and Conditions Page](#).