

## PICALM Antibody

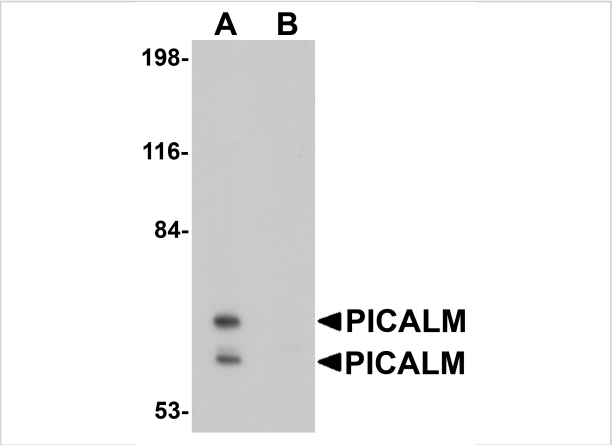
CATALOG NUMBER: 5553

### Specifications

Host Species	Rabbit
Species Reactivity	Human, Mouse, Rat
Immunogen	PICALM antibody was raised against a 15 amino acid synthetic peptide from near the amino terminus of human PICALM. The immunogen is located within the first 50 amino acids of PICALM.
Conjugate	Unconjugated
Tested Applications	ELISA, IF, WB
User Note	Optimal dilutions for each application to be determined by the researcher.

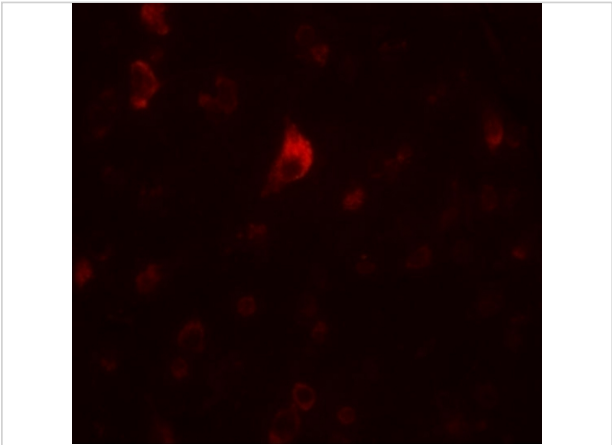
### Properties

Purification	PICALM Antibody is affinity chromatography purified via peptide column.
Clonality	Polyclonal
Isotype	IgG
Physical State	Liquid
Buffer	PICALM Antibody is supplied in PBS containing 0.02% sodium azide.
Concentration	1 mg/mL
Storage Conditions	PICALM antibody can be stored at 4°C for three months and -20°C, stable for up to one year. As with all antibodies care should be taken to avoid repeated freeze thaw cycles. Antibodies should not be exposed to prolonged high temperatures.



PICALM Antibody 1

Western blot analysis of PICALM in EL4 cell lysate with PICALM antibody at 1 µg/mL in (A) the absence and (B) the presence of blocking peptide.



PICALM Antibody 2

Immunofluorescence of PICALM in human brain tissue with PICALM antibody at 20 µg/mL.

Disclaimer

Disclaimer	Optimal dilutions/concentrations should be determined by the end user. The information provided is a guideline for product use. This product is for research use only.
------------	--

For research use only. For additional information, visit ProSci's [Terms and Conditions Page](#).