

NAT11 Antibody

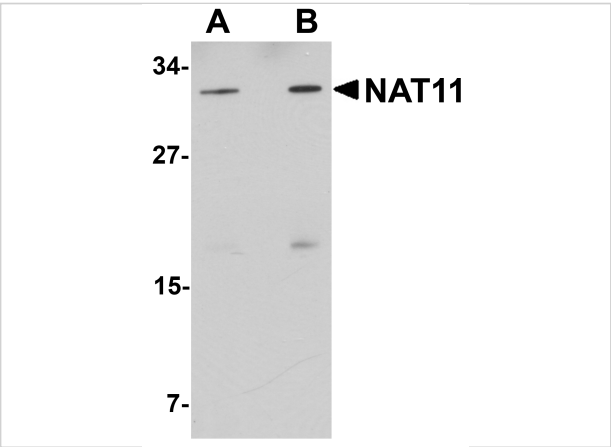
CATALOG NUMBER: 5549

Specifications

Host Species	Rabbit
Species Reactivity	Human, Mouse
Immunogen	NAT11 antibody was raised against a 15 amino acid synthetic peptide near the carboxy terminus of human NAT11. The immunogen is located within the last 50 amino acids of NAT11.
Conjugate	Unconjugated
Tested Applications	ELISA, IF, IHC-P, WB
User Note	Optimal dilutions for each application to be determined by the researcher.

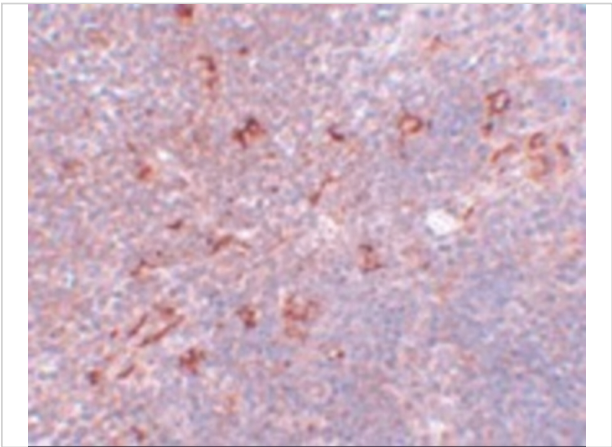
Properties

Purification	NAT11 Antibody is affinity chromatography purified via peptide column.
Clonality	Polyclonal
Isotype	IgG
Physical State	Liquid
Buffer	NAT11 Antibody is supplied in PBS containing 0.02% sodium azide.
Concentration	1 mg/mL
Storage Conditions	NAT11 antibody can be stored at 4°C for three months and -20°C, stable for up to one year. As with all antibodies care should be taken to avoid repeated freeze thaw cycles. Antibodies should not be exposed to prolonged high temperatures.



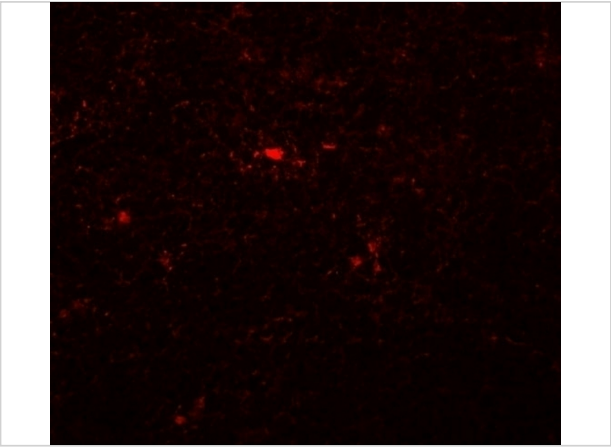
NAT11 Antibody 1

Western blot analysis of NAT11 in human thymus tissue lysate with NAT11 antibody at (A) 1 and (B) 2 $\mu\text{g/mL}$.



NAT11 Antibody 2

Immunohistochemistry of NAT11 in mouse thymus tissue with NAT11 antibody at 5 $\mu\text{g/mL}$.



NAT11 Antibody 3

Immunofluorescence of NAT11 in mouse thymus tissue with NAT11 antibody at 20 $\mu\text{g/mL}$.

Disclaimer

Disclaimer	Optimal dilutions/concentrations should be determined by the end user. The information provided is a guideline for product use. This product is for research use only.
------------	--

For research use only. For additional information, visit ProSci's [Terms and Conditions Page](#).