

MRE11 Antibody

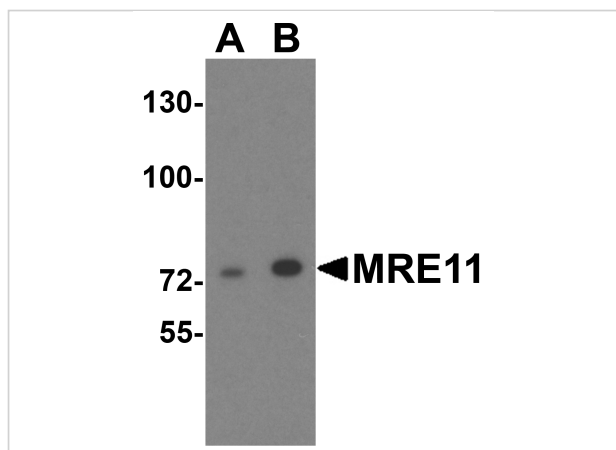
CATALOG NUMBER: 5547

Specifications

Host Species	Rabbit
Species Reactivity	Human, Mouse, Rat
Homology	Predicted species reactivity based on immunogen sequence: Chicken: (93%)
Immunogen	MRE11 antibody was raised against a 14 amino acid synthetic peptide from near the amino terminus human MRE11. The immunogen is located within amino acids 40 - 90 of MRE11.
Conjugate	Unconjugated
Tested Applications	ELISA, IF, IHC-P, WB
User Note	Optimal dilutions for each application to be determined by the researcher.
Predicted Molecular Weight	Predicted: 78 kDa Observed: 73 kDa

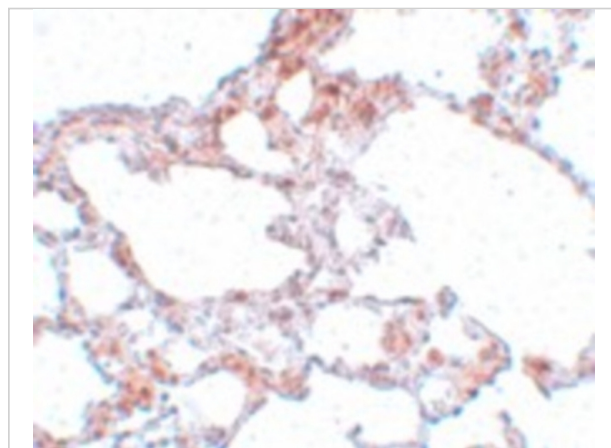
Properties

Purification	MRE11 Antibody is affinity chromatography purified via peptide column.
Clonality	Polyclonal
Isotype	IgG
Physical State	Liquid
Buffer	MRE11 Antibody is supplied in PBS containing 0.02% sodium azide.
Concentration	1 mg/mL
Storage Conditions	MRE11 antibody can be stored at 4°C for three months and -20°C, stable for up to one year. As with all antibodies care should be taken to avoid repeated freeze thaw cycles. Antibodies should not be exposed to prolonged high temperatures.



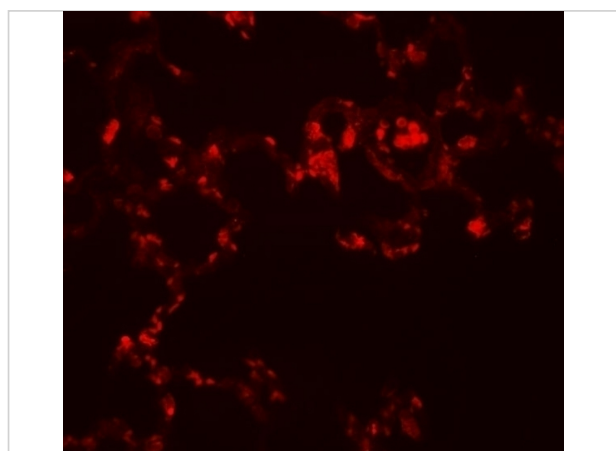
MRE11 Antibody 1

Western blot analysis of MRE11 in A549 cell lysate with MRE11 antibody at (A) 1 and (B) 2 $\mu\text{g/mL}$.



MRE11 Antibody 2

Immunohistochemistry of MRE11 in rat lung tissue with MRE11 antibody at 5 $\mu\text{g/mL}$.



MRE11 Antibody 3

Immunofluorescence of MRE11 in rat lung tissue with MRE11 antibody at 20 $\mu\text{g/mL}$.

Disclaimer

Disclaimer

Optimal dilutions/concentrations should be determined by the end user. The information provided is a guideline for product use. This product is for research use only.

For research use only. For additional information, visit ProSci's [Terms and Conditions Page](#).