

## RHBDD1 Antibody

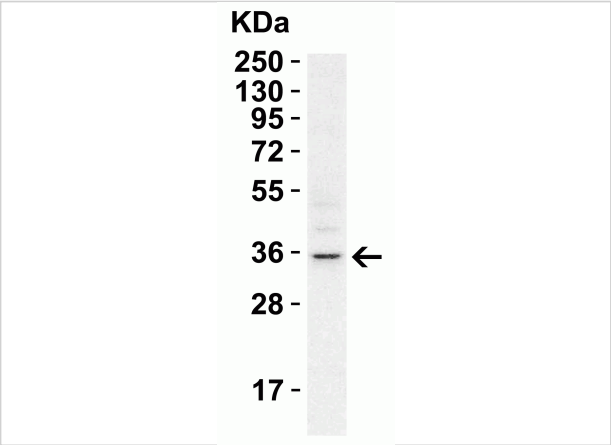
CATALOG NUMBER: 5525

### Specifications

Host Species	Rabbit
Species Reactivity	Human, Mouse
Homology	Predicted species reactivity based on immunogen sequence: Rat: (86%)
Immunogen	RHBDD1 antibody was raised against a 14 amino acid synthetic peptide from near the carboxy terminus of human RHBDD1. The immunogen is located within the last 50 amino acids of RHBDD1.
Conjugate	Unconjugated
Tested Applications	ELISA, WB
User Note	Optimal dilutions for each application to be determined by the researcher.

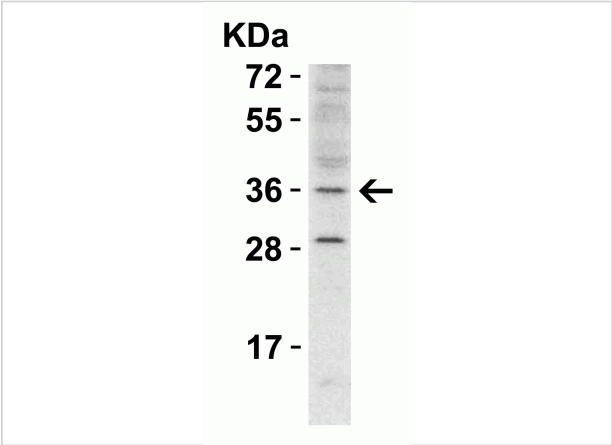
### Properties

Purification	RHBDD1 Antibody is affinity chromatography purified via peptide column.
Clonality	Polyclonal
Isotype	IgG
Physical State	Liquid
Buffer	RHBDD1 Antibody is supplied in PBS containing 0.02% sodium azide.
Concentration	1 mg/mL
Storage Conditions	RHBDD1 antibody can be stored at 4°C for three months and -20°C, stable for up to one year. As with all antibodies care should be taken to avoid repeated freeze thaw cycles. Antibodies should not be exposed to prolonged high temperatures.



RHBDD1 Antibody 1

**WB Validation in A549 Cells**  
Loading: 15 µg of cell lysate Antibodies: RHBDD1, 5525 1 µg/ml, 1 h incubation at RT in 5% NFDm/TBST.Secondary: Goat Anti-Rabbit IgG HRP conjug...



RHBDD1 Antibody 2

**WB Validation in Mouse Heart**  
Loading: 15 µg of lysate Antibodies: RHBDD1, 5525 1 µg/ml, 1 h incubation at RT in 5% NFDm/TBST.Secondary: Goat Anti-Rabbit IgG HRP conjugate ...

Disclaimer

Disclaimer	Optimal dilutions/concentrations should be determined by the end user. The information provided is a guideline for product use. This product is for research use only.
------------	--

For research use only. For additional information, visit ProSci's [Terms and Conditions Page](#).