

## TMEM38B Antibody

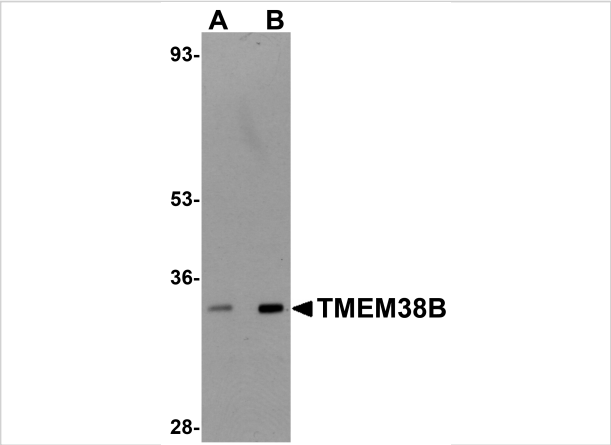
CATALOG NUMBER: 5523

### Specifications

Host Species	Rabbit
Species Reactivity	Human, Mouse, Rat
Immunogen	TMEM38B antibody was raised against a 17 amino acid synthetic peptide from near the carboxy terminus of human TMEM38B. The immunogen is located within the last 50 amino acids of TMEM38B.
Conjugate	Unconjugated
Tested Applications	ELISA, IF, IHC-P, WB
User Note	Optimal dilutions for each application to be determined by the researcher.

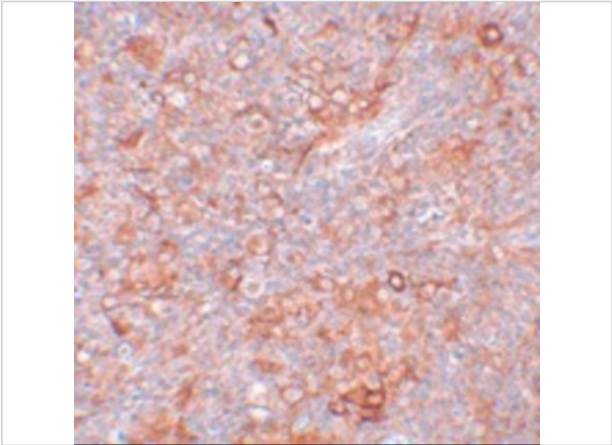
### Properties

Purification	TMEM38B Antibody is affinity chromatography purified via peptide column.
Clonality	Polyclonal
Isotype	IgG
Physical State	Liquid
Buffer	TMEM38B Antibody is supplied in PBS containing 0.02% sodium azide.
Concentration	1 mg/mL
Storage Conditions	TMEM38B antibody can be stored at 4°C for three months and -20°C, stable for up to one year. As with all antibodies care should be taken to avoid repeated freeze thaw cycles. Antibodies should not be exposed to prolonged high temperatures.



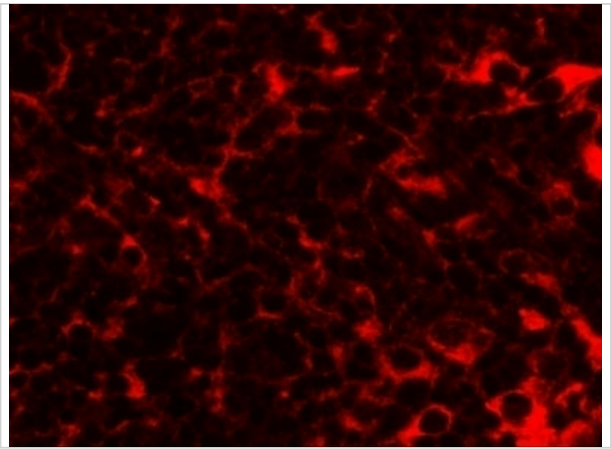
TMEM38B Antibody 1

Western blot analysis of TMEM38B in rat thymus tissue lysate with TMEM38B antibody at (A) 1 and (B) 2 µg/mL.



TMEM38B Antibody 2

Immunohistochemistry of TMEM38B in mouse thymus tissue with TMEM38B antibody at 5 µg/mL.



TMEM38B Antibody 3

Immunofluorescence of TMEM38B in mouse thymus tissue with TMEM38B antibody at 20 µg/mL.

Disclaimer

Disclaimer	Optimal dilutions/concentrations should be determined by the end user. The information provided is a guideline for product use. This product is for research use only.
------------	--

For research use only. For additional information, visit ProSci's [Terms and Conditions Page](#).