

PPAPDC3 Antibody

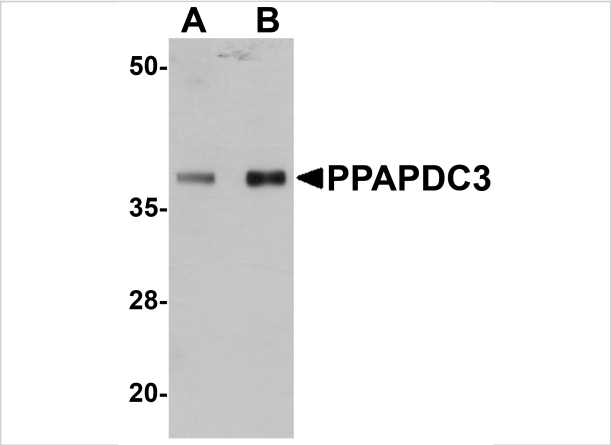
CATALOG NUMBER: 5519

Specifications

Host Species	Rabbit
Species Reactivity	Human, Mouse, Rat
Immunogen	PPAPDC3 antibody was raised against a 19 amino acid synthetic peptide from near the amino of terminus human PPAPDC3. The immunogen is located within the first 50 amino acids of PPAPDC3.
Conjugate	Unconjugated
Tested Applications	ELISA, IF, WB
User Note	Optimal dilutions for each application to be determined by the researcher.

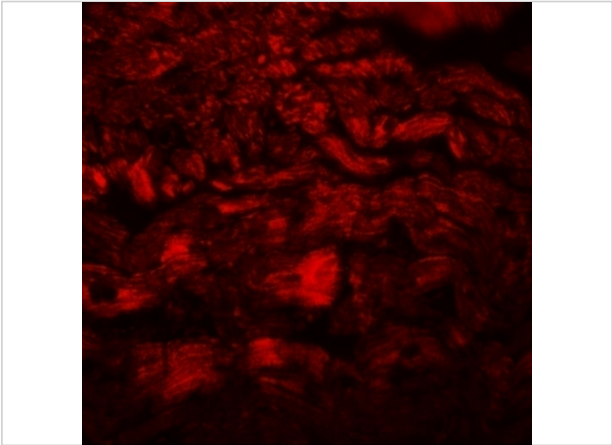
Properties

Purification	PPAPDC3 Antibody is affinity chromatography purified via peptide column.
Clonality	Polyclonal
Isotype	IgG
Physical State	Liquid
Buffer	PPAPDC3 Antibody is supplied in PBS containing 0.02% sodium azide.
Concentration	1 mg/mL
Storage Conditions	PPAPDC3 antibody can be stored at 4°C for three months and -20°C, stable for up to one year. As with all antibodies care should be taken to avoid repeated freeze thaw cycles. Antibodies should not be exposed to prolonged high temperatures.



PPAPDC3 Antibody 1

Western blot analysis of PPAPDC3 in mouse heart tissue lysate with PPAPDC3 antibody at (A) 1 and (B) 2 µg/mL.



PPAPDC3 Antibody 2

Immunofluorescence of PPAPDC3 in mouse heart tissue with PPAPDC3 antibody at 20 µg/mL.

Disclaimer

Disclaimer	Optimal dilutions/concentrations should be determined by the end user. The information provided is a guideline for product use. This product is for research use only.
------------	--

For research use only. For additional information, visit ProSci's [Terms and Conditions Page](#).