

## SRPX1 Antibody

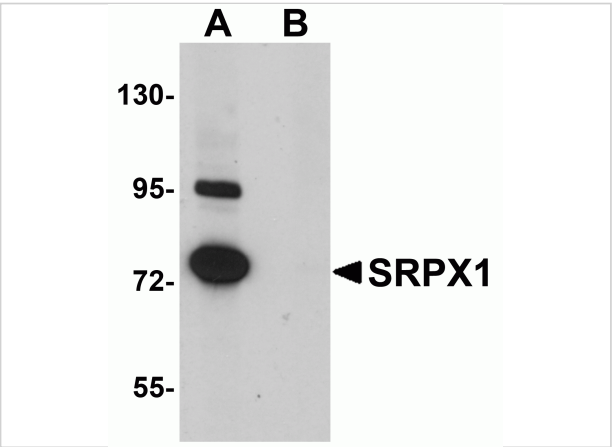
CATALOG NUMBER: 5473

### Specifications

Host Species	Rabbit
Species Reactivity	Human, Mouse, Rat
Immunogen	SRPX1 antibody was raised against a 13 amino acid synthetic peptide from near the amino terminus of human SRPX1. The immunogen is located within amino acids 30 - 80 of SRPX1.
Conjugate	Unconjugated
Tested Applications	ELISA, IF, IHC-P, WB
User Note	Optimal dilutions for each application to be determined by the researcher.

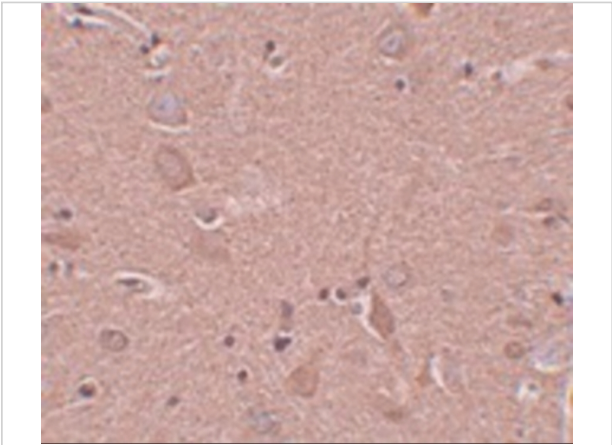
### Properties

Purification	SRPX1 Antibody is affinity chromatography purified via peptide column.
Clonality	Polyclonal
Isotype	IgG
Physical State	Liquid
Buffer	SRPX1 Antibody is supplied in PBS containing 0.02% sodium azide.
Concentration	1 mg/mL
Storage Conditions	SRPX1 antibody can be stored at 4°C for three months and -20°C, stable for up to one year. As with all antibodies care should be taken to avoid repeated freeze thaw cycles. Antibodies should not be exposed to prolonged high temperatures.



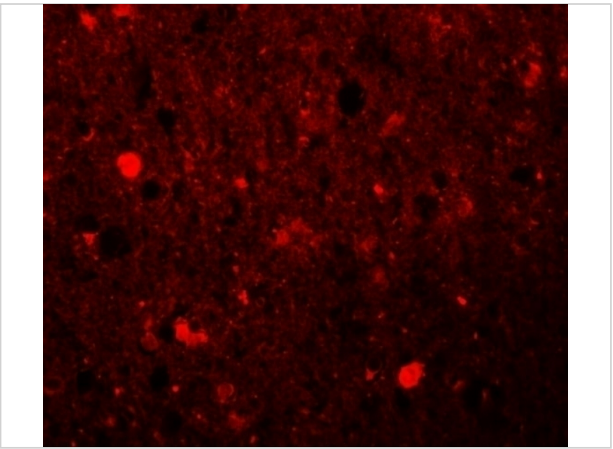
SRPX1 Antibody 1

Western blot analysis of SRPX1 in SK-N-SH cell lysate with SRPX1 antibody at 0.25 µg/mL in (A) the absence and (B) the presence of blocking peptide.



SRPX1 Antibody 2

Immunohistochemistry of SRPX1 in human brain tissue with SRPX1 antibody at 5 µg/mL.



SRPX1 Antibody 3

Immunofluorescence of SRPX1 in human brain tissue with SRPX1 antibody at 20 µg/mL.

Disclaimer

Disclaimer	Optimal dilutions/concentrations should be determined by the end user. The information provided is a guideline for product use. This product is for research use only.
------------	--

For research use only. For additional information, visit ProSci's [Terms and Conditions Page](#).