

SLAIN2 Antibody

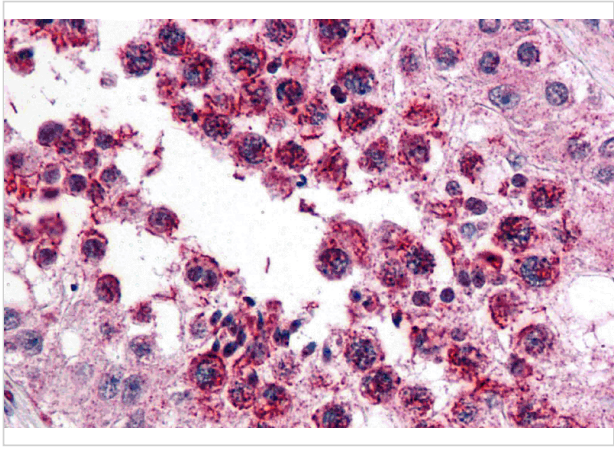
CATALOG NUMBER: 5471

Specifications

| | |
|----------------------------|--|
| Host Species | Rabbit |
| Species Reactivity | Human |
| Homology | Predicted species reactivity based on immunogen sequence: Bovine: (100%), Mouse: (93%) |
| Immunogen | SLAIN2 antibody was raised against a 14 amino acid synthetic peptide near the amino terminus of human SLAIN2. The immunogen is located within amino acids 70 - 120 of SLAIN2. |
| Conjugate | Unconjugated |
| Tested Applications | ELISA, IHC-P |
| User Note | Optimal dilutions for each application to be determined by the researcher. |
| Specificity | SLAIN2 antibody is predicted not to cross-react with SLAIN1. |
| Predicted Molecular Weight | 64 kDa |

Properties

| | |
|--------------------|--|
| Purification | SLAIN2 Antibody is affinity chromatography purified via peptide column. |
| Clonality | Polyclonal |
| Isotype | IgG |
| Physical State | Liquid |
| Buffer | SLAIN2 Antibody is supplied in PBS containing 0.02% sodium azide. |
| Concentration | 1 mg/mL |
| Storage Conditions | SLAIN2 antibody can be stored at 4°C for three months and -20°C, stable for up to one year. As with all antibodies care should be taken to avoid repeated freeze thaw cycles. Antibodies should not be exposed to prolonged high temperatures. |



SLAIN2 Antibody 1

Immunohistochemistry of SLAIN2 in human testis with SLAIN2 antibody at 5 µg/mL.

Disclaimer

| | |
|------------|--|
| Disclaimer | Optimal dilutions/concentrations should be determined by the end user. The information provided is a guideline for product use. This product is for research use only. |
|------------|--|

For research use only. For additional information, visit ProSci's [Terms and Conditions Page](#).