

## FRMPD3 Antibody

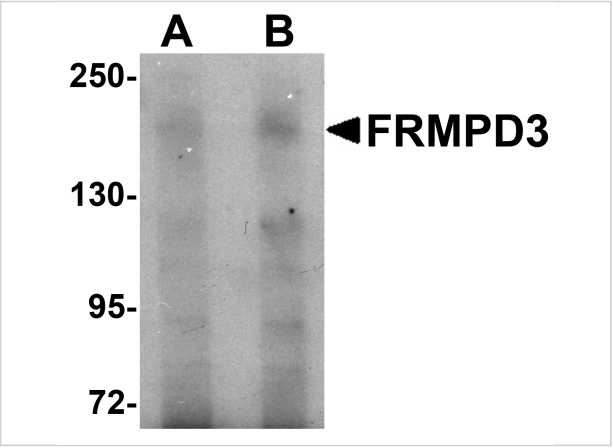
CATALOG NUMBER: 5457

### Specifications

Host Species	Rabbit
Species Reactivity	Human, Mouse
Immunogen	FRMPD3 antibody was raised against an 18 amino acid synthetic peptide from near the center of human FRMPD3. The immunogen is located within amino acids 690 - 740 of FRMPD3.
Conjugate	Unconjugated
Tested Applications	ELISA, IF, IHC-P, WB
User Note	Optimal dilutions for each application to be determined by the researcher.

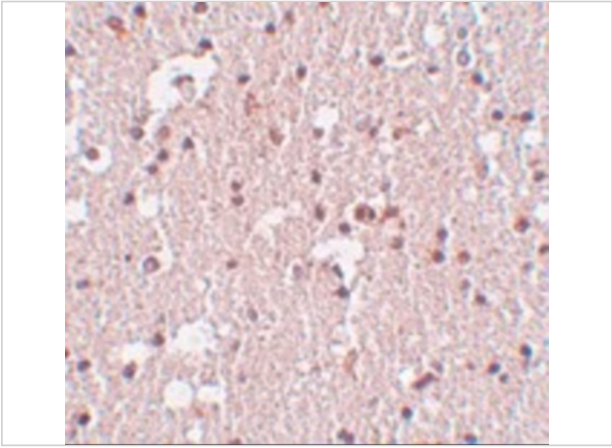
### Properties

Purification	FRMPD3 Antibody is affinity chromatography purified via peptide column.
Clonality	Polyclonal
Isotype	IgG
Physical State	Liquid
Buffer	FRMPD3 Antibody is supplied in PBS containing 0.02% sodium azide.
Concentration	1 mg/mL
Storage Conditions	FRMPD3 antibody can be stored at 4°C for three months and -20°C, stable for up to one year. As with all antibodies care should be taken to avoid repeated freeze thaw cycles. Antibodies should not be exposed to prolonged high temperatures.



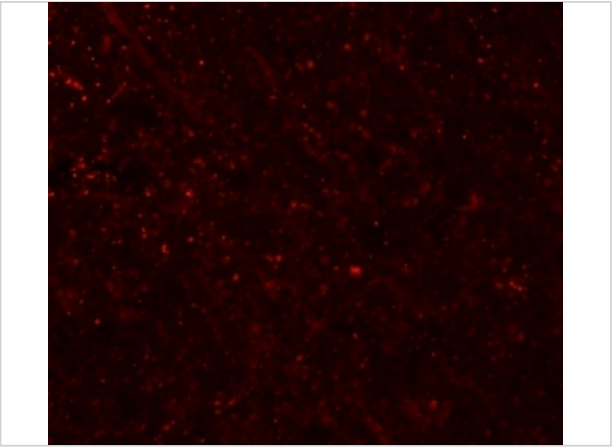
FRMPD3 Antibody 1

Western blot analysis of FRMPD3 in Jurkat cell lysate with FRMPD3 antibody at (A) 1 and (B) 2 µg/mL.



FRMPD3 Antibody 2

Immunohistochemistry of FRMPD3 in human brain tissue with FRMPD3 antibody at 5 µg/mL.



FRMPD3 Antibody 3

Immunofluorescence of FRMPD3 in rat brain tissue with FRMPD3 antibody at 20 µg/mL.

Disclaimer

Disclaimer	Optimal dilutions/concentrations should be determined by the end user. The information provided is a guideline for product use. This product is for research use only.
------------	--

For research use only. For additional information, visit ProSci's [Terms and Conditions Page](#).