

FRMPD2 Antibody

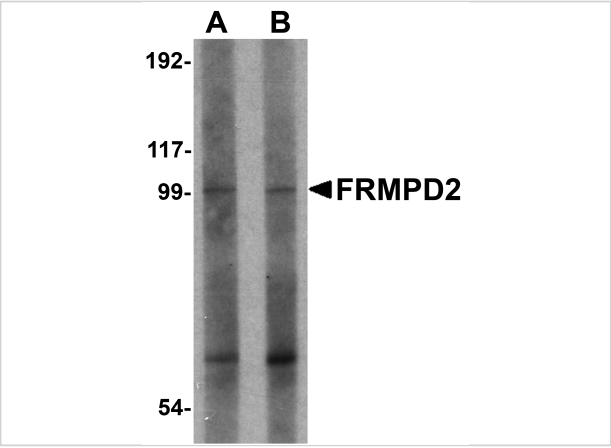
CATALOG NUMBER: 5455

Specifications

Host Species	Rabbit
Species Reactivity	Human, Mouse, Rat
Immunogen	FRMPD2 antibody was raised against a 15 amino acid synthetic peptide from near the amino terminus of human FRMPD2. The immunogen is located within amino acids 80 - 130 of FRMPD2.
Conjugate	Unconjugated
Tested Applications	ELISA, IHC-P, WB
User Note	Optimal dilutions for each application to be determined by the researcher.

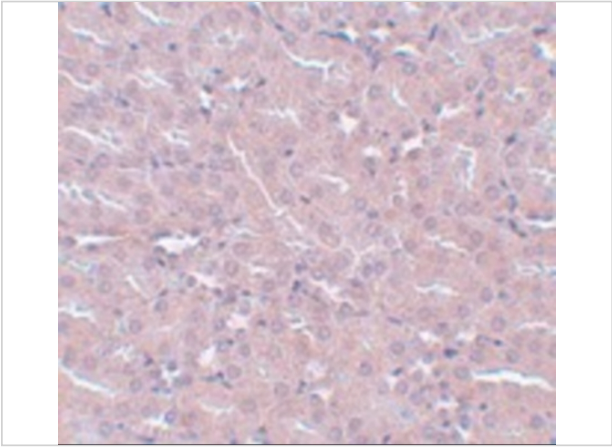
Properties

Purification	FRMPD2 Antibody is affinity chromatography purified via peptide column.
Clonality	Polyclonal
Isotype	IgG
Physical State	Liquid
Buffer	FRMPD2 Antibody is supplied in PBS containing 0.02% sodium azide.
Concentration	1 mg/mL
Storage Conditions	FRMPD2 antibody can be stored at 4°C for three months and -20°C, stable for up to one year. As with all antibodies care should be taken to avoid repeated freeze thaw cycles. Antibodies should not be exposed to prolonged high temperatures.



FRMPD2 Antibody 1

Western blot analysis of FRMPD2 in rat kidney tissue lysate with FRMPD2 antibody at (A) 1 and (B) 2 µg/mL.



FRMPD2 Antibody 2

Immunohistochemistry of FRMPD2 in mouse kidney tissue with FRMPD2 antibody at 5 µg/mL.

Disclaimer

Disclaimer	Optimal dilutions/concentrations should be determined by the end user. The information provided is a guideline for product use. This product is for research use only.
------------	--

For research use only. For additional information, visit ProSci's [Terms and Conditions Page](#).