

NALP3 Antibody

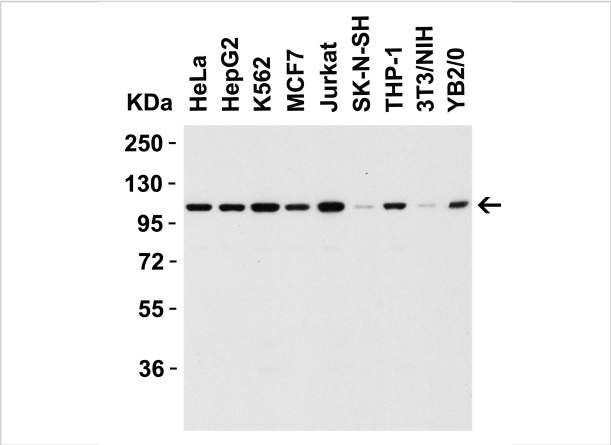
CATALOG NUMBER: 5447

Specifications

Host Species	Rabbit
Species Reactivity	Human, Mouse, Rat
Homology	Predicted species reactivity based on immunogen sequence: Bovine: (88%)
Immunogen	Anti-NALP3 antibody (5447) was raised against a 16 amino acid synthetic peptide from near the amino terminus of human NALP3. The immunogen is located within amino acids 120 - 170 of NALP3.
Conjugate	Unconjugated
Tested Applications	ELISA, IF, IHC, WB
User Note	Optimal dilutions for each application to be determined by the researcher.
Predicted Molecular Weight	Predicted: 118 kDa Observed: 118 kDa

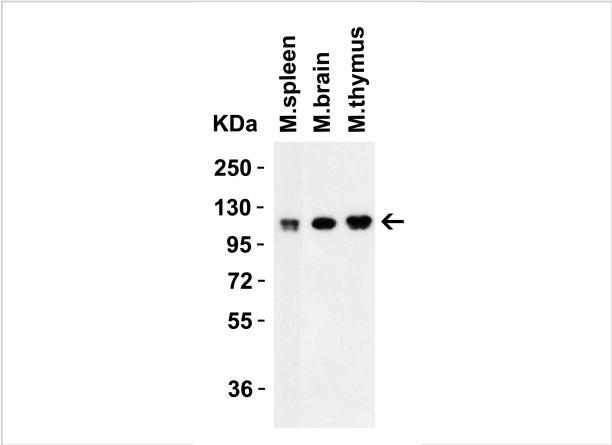
Properties

Purification	NALP3 Antibody is affinity chromatography purified via peptide column.
Clonality	Polyclonal
Isotype	IgG
Physical State	Liquid
Buffer	NALP3 Antibody is supplied in PBS containing 0.02% sodium azide.
Concentration	1 mg/mL
Storage Conditions	NALP3 antibody can be stored at 4°C for three months and -20°C, stable for up to one year. As with all antibodies care should be taken to avoid repeated freeze thaw cycles. Antibodies should not be exposed to prolonged high temperatures.



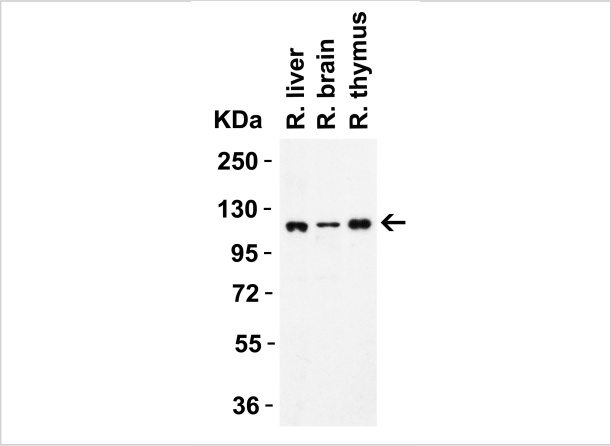
NALP3 Antibody 1

Figure 1 WB Validation in Human, Mouse and Rat Cell Lines
 Loading: 15 µg of lysate. Antibodies: NALP3 5447, 0.5 µg/mL, 1 h incubation at RT in 8% NFDM/TBST. Secondary: Goat...



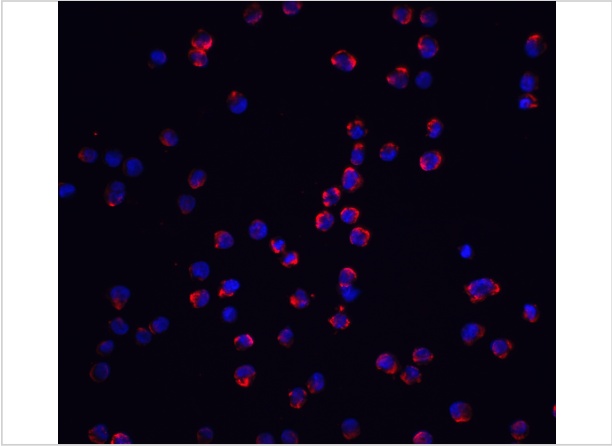
NALP3 Antibody 2

Figure 2 Western Blot Validation in Mouse Tissues
 Loading: 15 µg of lysates per lane. Antibodies: NALP3 5447, 0.5 µg/mL, 1h incubation at RT in 8% NFDM/TBST. Secondary: Goat ...



NALP3 Antibody 3

Figure 3 Western Blot Validation in Rat Tissues
 Loading: 15 µg of lysates per lane. Antibodies: NALP3 5447, 0.5 µg/mL, 1h incubation at RT in 5% NFDM/TBST. Secondary: Goat ant...



NALP3 Antibody 4

Figure 4 Immunofluorescence Validation of NALP3 in Human K562 Cells
 Immunofluorescent analysis of 4% paraformaldehyde-fixed K562 labeling NALP3 with 5447 at 5 µg/mL, followed by...

Disclaimer

Disclaimer	Optimal dilutions/concentrations should be determined by the end user. The information provided is a guideline for product use. This product is for research use only.
------------	--

For research use only. For additional information, visit ProSci's [Terms and Conditions Page](#).