

Mimitin Antibody

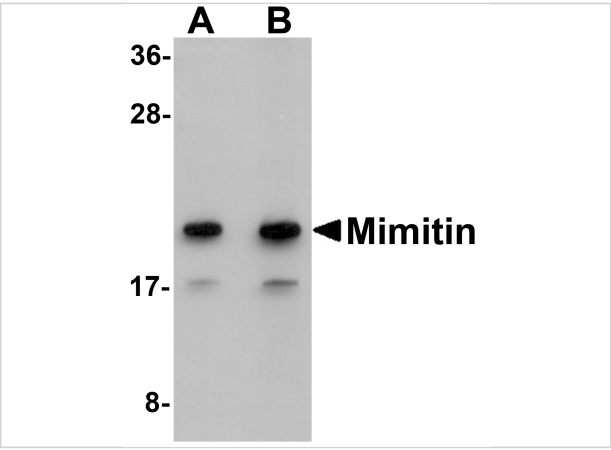
CATALOG NUMBER: 5445

Specifications

Host Species	Rabbit
Species Reactivity	Human
Immunogen	Mimitin antibody was raised against a 14 amino acid synthetic peptide from near the carboxy terminus of human Mimitin. The immunogen is located within the last 50 amino acids of Mimitin.
Conjugate	Unconjugated
Tested Applications	ELISA, IF, WB
User Note	Optimal dilutions for each application to be determined by the researcher.

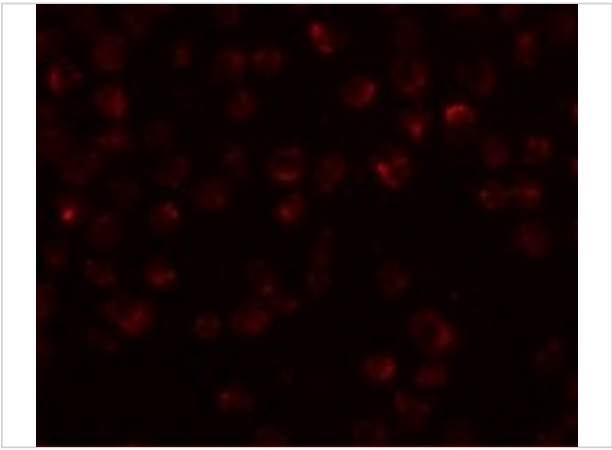
Properties

Purification	Mimitin Antibody is affinity chromatography purified via peptide column.
Clonality	Polyclonal
Isotype	IgG
Physical State	Liquid
Buffer	Mimitin Antibody is supplied in PBS containing 0.02% sodium azide.
Concentration	1 mg/mL
Storage Conditions	Mimitin antibody can be stored at 4°C for three months and -20°C, stable for up to one year. As with all antibodies care should be taken to avoid repeated freeze thaw cycles. Antibodies should not be exposed to prolonged high temperatures.



Mimitin Antibody 1

Western blot analysis of Mimitin in Raji cell lysate with Mimitin antibody at (A) 1 and (B) 2 $\mu\text{g/mL}$.



Mimitin Antibody 2

Immunofluorescence of Mimitin in Raji cells with Mimitin antibody at 20 $\mu\text{g/mL}$.

Disclaimer

Disclaimer	Optimal dilutions/concentrations should be determined by the end user. The information provided is a guideline for product use. This product is for research use only.
------------	--

For research use only. For additional information, visit ProSci's [Terms and Conditions Page](#).