

GOLPH2 Antibody

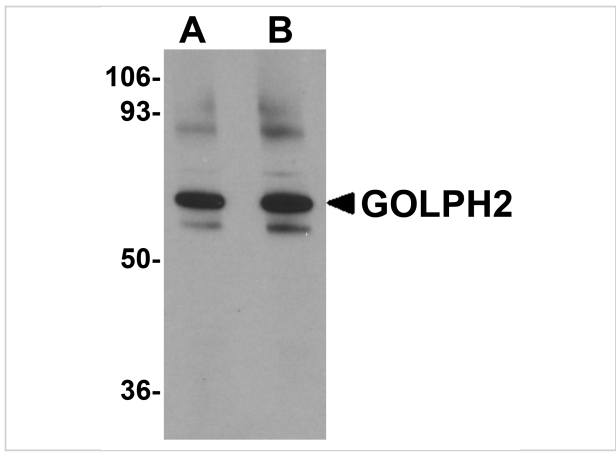
CATALOG NUMBER: 5441

Specifications

Host Species	Rabbit
Species Reactivity	Human, Mouse, Rat
Immunogen	GOLPH2 antibody was raised against an 18 amino acid synthetic peptide from near the center of human GOLPH2. The immunogen is located within amino acids 130 - 180 of GOLPH2.
Conjugate	Unconjugated
Tested Applications	ELISA, IF, IHC-P, WB
User Note	Optimal dilutions for each application to be determined by the researcher.
Predicted Molecular Weight	Predicted: 67 kDa Observed: 70 kDa

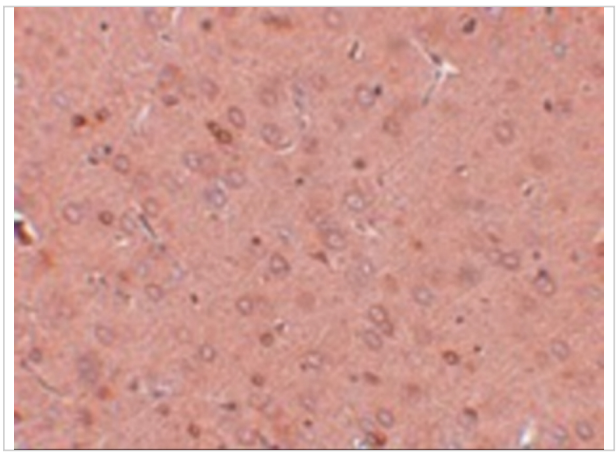
Properties

Purification	GOLPH2 Antibody is affinity chromatography purified via peptide column.
Clonality	Polyclonal
Isotype	IgG
Physical State	Liquid
Buffer	GOLPH2 Antibody is supplied in PBS containing 0.02% sodium azide.
Concentration	1 mg/mL
Storage Conditions	GOLPH2 antibody can be stored at 4°C for three months and -20°C, stable for up to one year. As with all antibodies care should be taken to avoid repeated freeze thaw cycles. Antibodies should not be exposed to prolonged high temperatures.



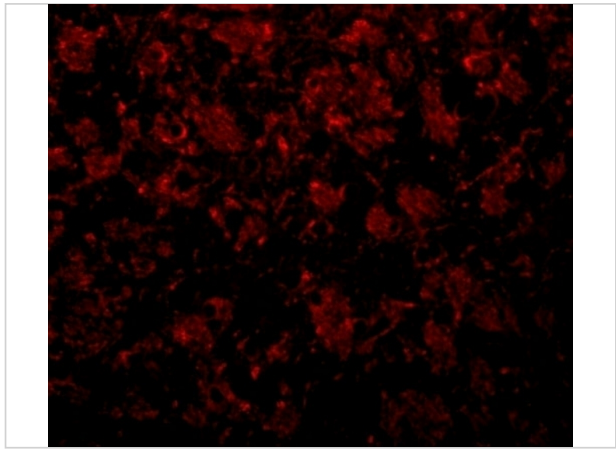
GOLPH2 Antibody 1

Western blot analysis of GOLPH2 in rat brain tissue lysate with GOLPH2 antibody at (A) 0.25 and (B) 0.5 µg/mL.



GOLPH2 Antibody 2

Immunohistochemistry of GOLPH2 in rat brain tissue with GOLPH2 antibody at 2.5 µg/mL.



GOLPH2 Antibody 3

Immunofluorescence of GOLPH2 in rat brain tissue with GOLPH2 antibody at 20 µg/mL.

Disclaimer

Disclaimer	Optimal dilutions/concentrations should be determined by the end user. The information provided is a guideline for product use. This product is for research use only.
------------	--

For research use only. For additional information, visit ProSci's [Terms and Conditions Page](#).