

JMJD5 Antibody

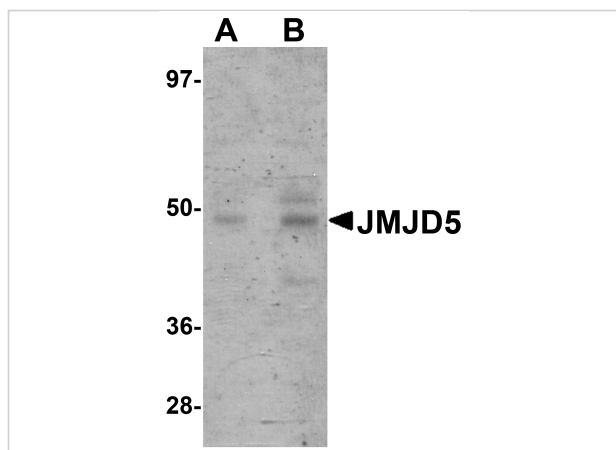
CATALOG NUMBER: 5381

Specifications

Host Species	Rabbit
Species Reactivity	Human, Mouse, Rat
Homology	Predicted species reactivity based on immunogen sequence: Bovine: (94%)
Immunogen	JMJD5 antibody was raised against an 18 amino acid synthetic peptide from near the carboxy terminus of human JMJD5. The immunogen is located within amino acids 350 - 400 of JMJD5.
Conjugate	Unconjugated
Tested Applications	ELISA, IF, IHC-P, WB
User Note	Optimal dilutions for each application to be determined by the researcher.

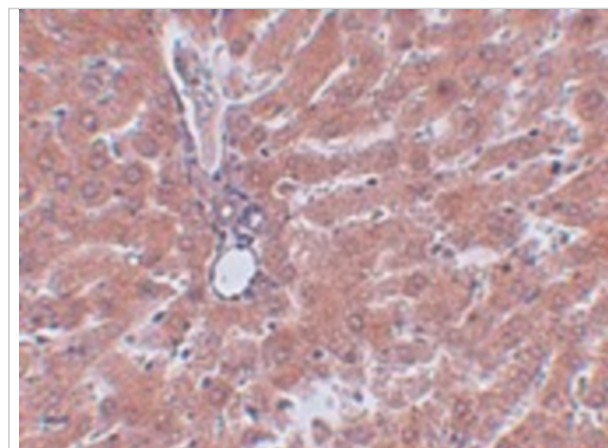
Properties

Purification	JMJD5 Antibody is affinity chromatography purified via peptide column.
Clonality	Polyclonal
Isotype	IgG
Physical State	Liquid
Buffer	JMJD5 Antibody is supplied in PBS containing 0.02% sodium azide.
Concentration	1 mg/mL
Storage Conditions	JMJD5 antibody can be stored at 4°C for three months and -20°C, stable for up to one year. As with all antibodies care should be taken to avoid repeated freeze thaw cycles. Antibodies should not be exposed to prolonged high temperatures.



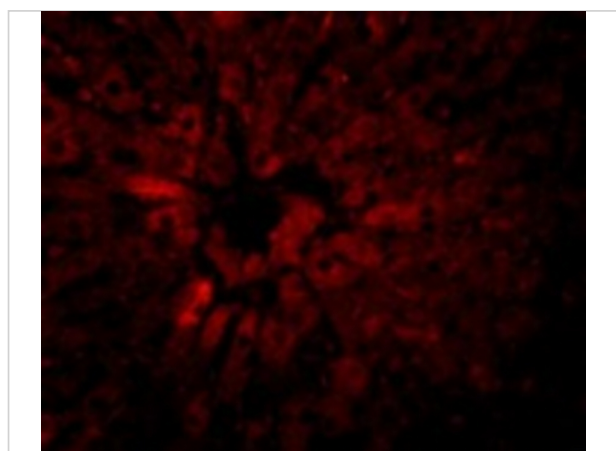
JMJD5 Antibody 1

Western blot analysis of JMJD5 in human liver tissue lysate with JMJD5 antibody at (A) 1 and (B) 2 $\mu\text{g/mL}$.



JMJD5 Antibody 2

Immunohistochemistry of JMJD5 in rat liver tissue with JMJD5 antibody at 2.5 $\mu\text{g/mL}$.



JMJD5 Antibody 3

Immunofluorescence of JMJD5 in Rat Liver cells with JMJD5 antibody at 20 $\mu\text{g/mL}$.

Disclaimer

Disclaimer

Optimal dilutions/concentrations should be determined by the end user. The information provided is a guideline for product use. This product is for research use only.

For research use only. For additional information, visit ProSci's [Terms and Conditions Page](#).