

JMJD2A Antibody

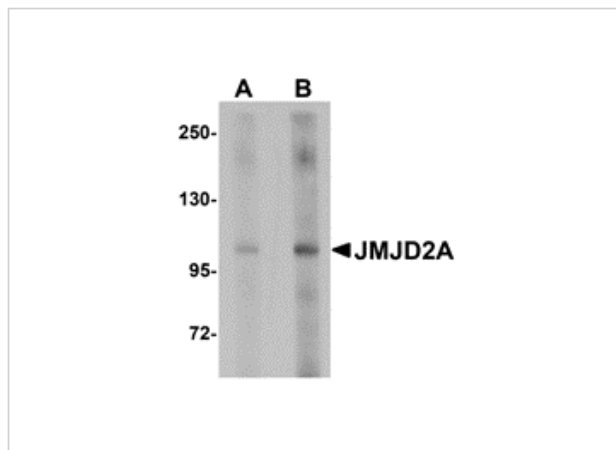
CATALOG NUMBER: 5373

Specifications

Host Species	Rabbit
Species Reactivity	Human, Mouse, Rat
Immunogen	JMJD2A antibody was raised against a 14 amino acid synthetic peptide from near the center of human JMJD2A. The immunogen is located within amino acids 340 - 390 of JMJD2A.
Conjugate	Unconjugated
Tested Applications	ELISA, IHC-P, WB
User Note	Optimal dilutions for each application to be determined by the researcher.

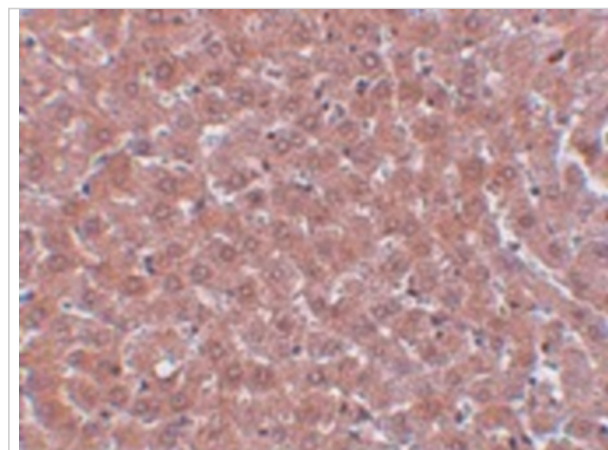
Properties

Purification	JMJD2A Antibody is affinity chromatography purified via peptide column.
Clonality	Polyclonal
Isotype	IgG
Physical State	Liquid
Buffer	JMJD2A Antibody is supplied in PBS containing 0.02% sodium azide.
Concentration	1 mg/mL
Storage Conditions	JMJD2A antibody can be stored at 4°C for three months and -20°C, stable for up to one year. As with all antibodies care should be taken to avoid repeated freeze thaw cycles. Antibodies should not be exposed to prolonged high temperatures.



JMJD2A Antibody 1

Western blot analysis of JMJD2A in rat liver tissue lysate with JMJD2A antibody at (A) 1 and (B) 2 $\mu\text{g/mL}$.



JMJD2A Antibody 2

Immunohistochemistry of JMJD2A in rat liver tissue with JMJD2A antibody at 5 $\mu\text{g/mL}$.

Disclaimer

Disclaimer

Optimal dilutions/concentrations should be determined by the end user. The information provided is a guideline for product use. This product is for research use only.

For research use only. For additional information, visit ProSci's [Terms and Conditions Page](#).